



Jennifer Bertino-Tarrant
County Executive
Rhonda R. Novak
Supervisor of Assessments

Disclaimer of Warranties and Accuracy of Data
Although the data developed by Will County for its maps, websites, and Geographic Information System has been produced and processed from sources believed to be reliable, no warranty, expressed or implied, is made regarding accuracy, adequacy, completeness, legality, reliability or usefulness of any information. This disclaimer applies to both isolated and aggregate uses of the information. The County and elected officials provide this information on an "as is" basis. All warranties of any kind, express or implied, including but not limited to the implied warranties of merchantability, fitness for a particular purpose, freedom from contamination by computer viruses or hackers and non-infringement of proprietary rights are disclaimed. Changes may be periodically made to the information herein; these changes may or may not be incorporated in any new version of the publication. If you have obtained information from any of the County web pages from a source other than the County pages, be aware that electronic data can be altered subsequent to original distribution. Data can also quickly become out of date. It is recommended that careful attention be paid to the contents of any data, and that the originator of the data or information be contacted with any questions regarding appropriate use. Please direct any questions to Mapping & Planning at (815) 740-4664.

Will County, Illinois
Tax Assessment Map
Revised for the 2021 Assessment
Copyrighted 2021 by Will County GIS Division

Map Page 05-13B-E

Homer Township
E.1/2 N.E. 1/4 Sec.13 T.36N. R.11E.

Subdivision List

S000055
Country Woods Sub
R90-054663
S007936
Cypress Pointe
R2004-173078
S009838
Cypress Pointe II
R2019-082357

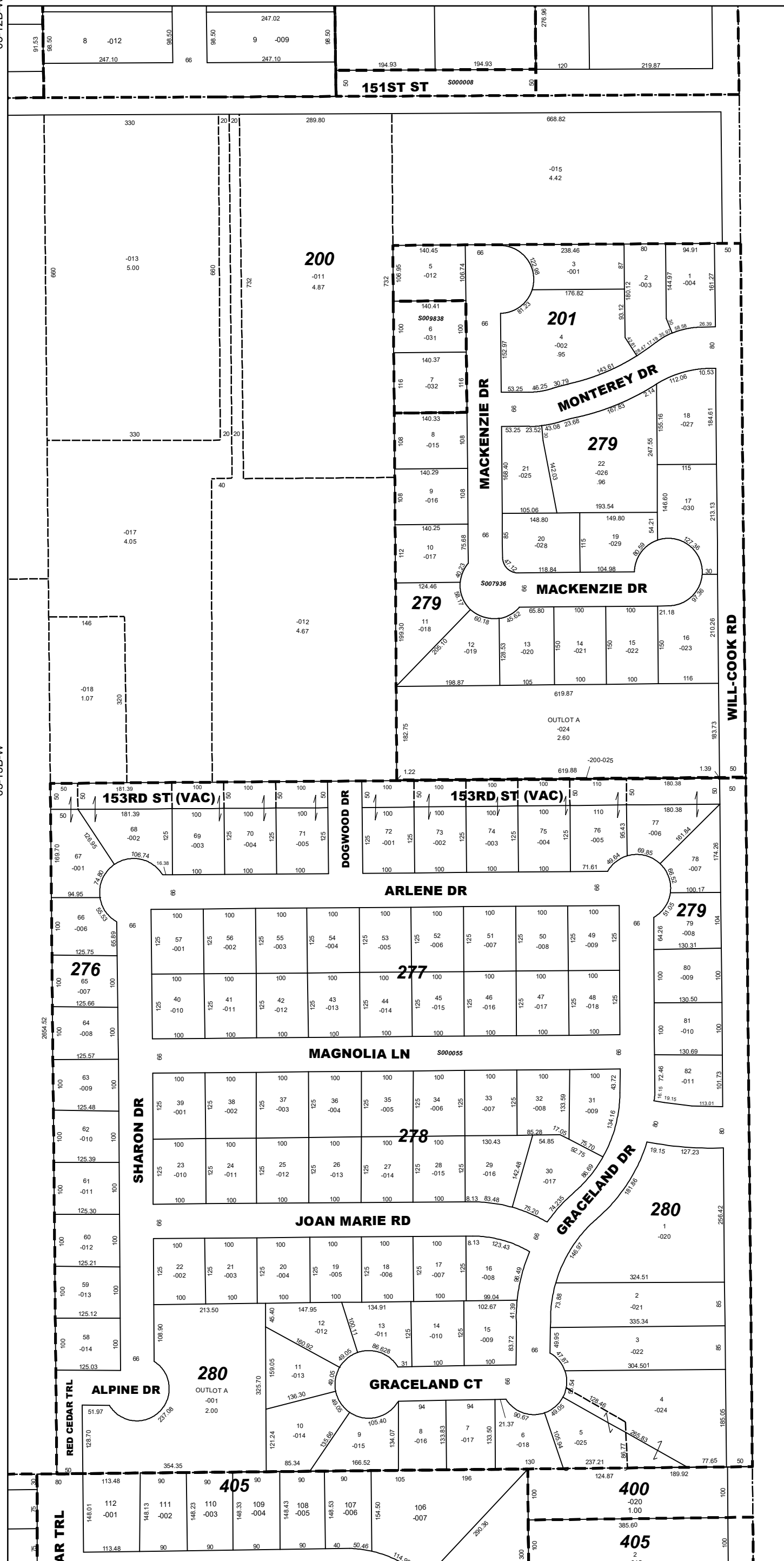
05-12D-W

05-12D-E

05-13B-W

05-13D-E

05-13D-W



COOK COUNTY

1 inch = 200 feet
Plot Date: Jul 07 2021