



**Jennifer Bertino-Tarrant**  
County Executive  
**Rhonda R. Novak**  
Supervisor of Assessments

Disclaimer of Warranties and Accuracy of Data  
Although the data developed by Will County for its maps, websites, and Geographic Information System has been produced and processed from sources believed to be reliable, no warranty, expressed or implied, is made regarding accuracy, adequacy, completeness, legality, reliability or usefulness of any information. This disclaimer applies to both isolated and aggregate uses of the information. The County and elected officials provide this information on an "as is" basis. All warranties of any kind, express or implied, including but not limited to the implied warranties of merchantability, fitness for a particular purpose, freedom from contamination by computer viruses or hackers and non-infringement of proprietary rights are disclaimed. Changes may be periodically made to the information herein; these changes may or may not be incorporated in any new version of the publication. If you have obtained information from any of the County web pages from a source other than the County pages, be aware that electronic data can be altered subsequent to original distribution. Data can also quickly become out of date. It is recommended that careful attention be paid to the contents of any data, and that the originator of the data or information be contacted with any questions regarding appropriate use. Please direct any questions to Mapping & Planning at (815) 740-4664.

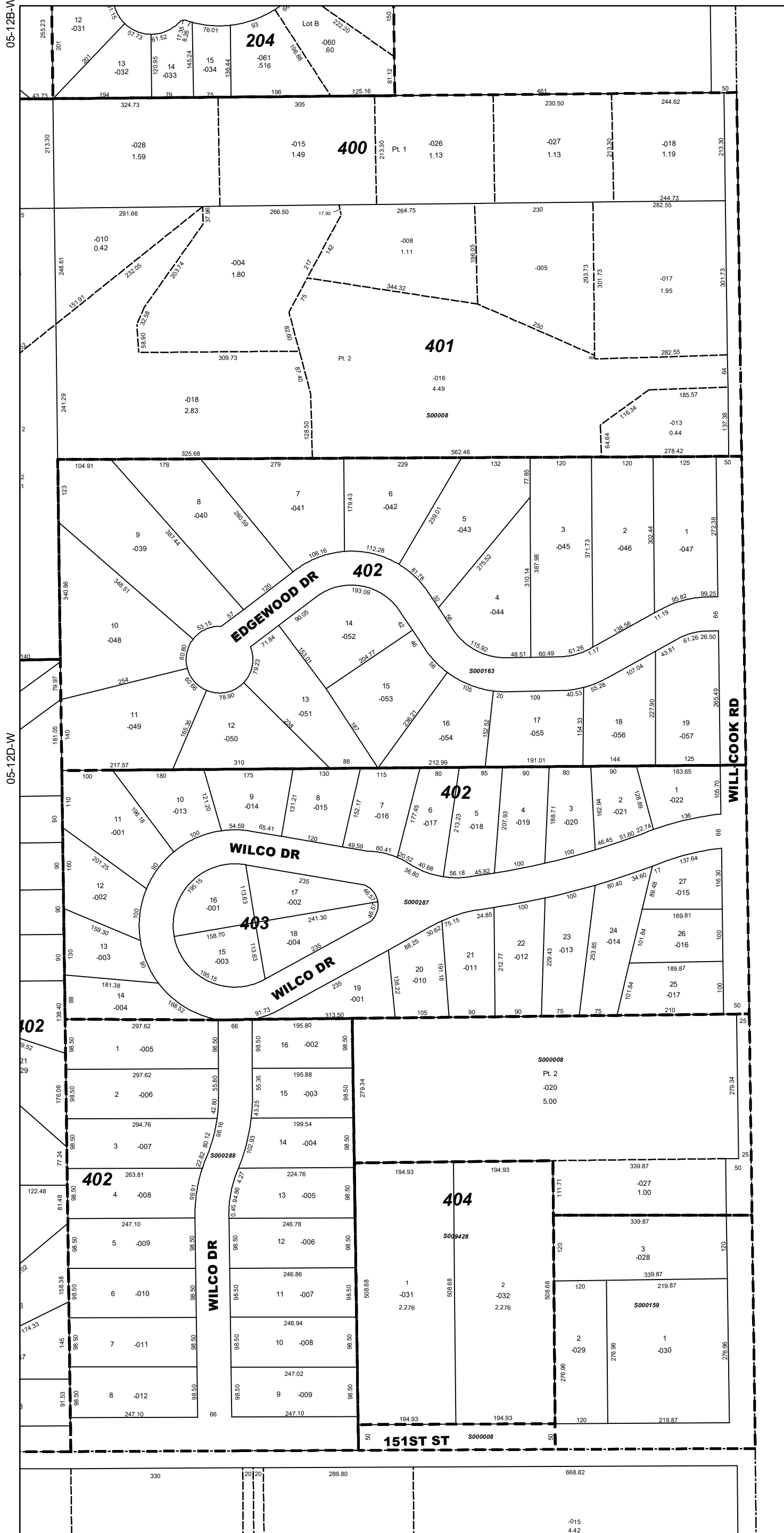
**Will County, Illinois**  
Tax Assessment Map  
Revised for the 2022 Assessment  
Copyrighted 2022 by Will County GIS Division

Map Page 05-12D-E

Homer Township  
E.1/2 S.E. 1/4 Sec.12 T.36N. R.11E.

05-12B-W

05-12B-E



Subdivision List

- S000008**  
Assessor's Sub of Sections 4, 8,9,12,13,16,18,20,21,22,26, 27,30,31,34 & 35, T36N-R11E 56070 (3-21 or 98-522 1/2)
- S000159**  
Maude Estates  
R92-101180
- S000163**  
Meadows Edge Sub  
R90-020007
- S000287**  
Wilco Estates  
875988 (31-72)
- S000288**  
Brashler & Kall's First Addn. to Wilco Estates  
925117 (32-103)
- S009428**  
Zegar Sub  
R2012-116822

COOK COUNTY

05-13B-W

05-13B-E

1 inch = 200 feet  
Plot Date: Jul 18 2022