



Jennifer Bertino-Tarrant
County Executive
Rhonda R. Novak
Supervisor of Assessments

Disclaimer of Warranties and Accuracy of Data
Although the data developed by Will County for its maps, websites, and Geographic Information System has been produced and processed from sources believed to be reliable, no warranty, expressed or implied, is made regarding accuracy, adequacy, completeness, legality, reliability or usefulness of any information. This disclaimer applies to both isolated and aggregate uses of the information. The County and elected officials provide this information on an "as is" basis. All warranties of any kind, express or implied, including but not limited to the implied warranties of merchantability, fitness for a particular purpose, freedom from contamination by computer viruses or hackers and non-infringement of proprietary rights are disclaimed. Changes may be periodically made to the information herein; these changes may or may not be incorporated in any new version of the publication. If you have obtained information from any of the County web pages from a source other than the County pages, be aware that electronic data can be altered subsequent to original distribution. Data can also quickly become out of date. It is recommended that careful attention be paid to the contents of any data, and that the originator of the data or information be contacted with any questions regarding appropriate use. Please direct any questions to Mapping & Planning at (815) 740-4664.

Will County, Illinois

Tax Assessment Map

Revised for the 2022 Assessment
Copyrighted 2022 by Will County GIS Division

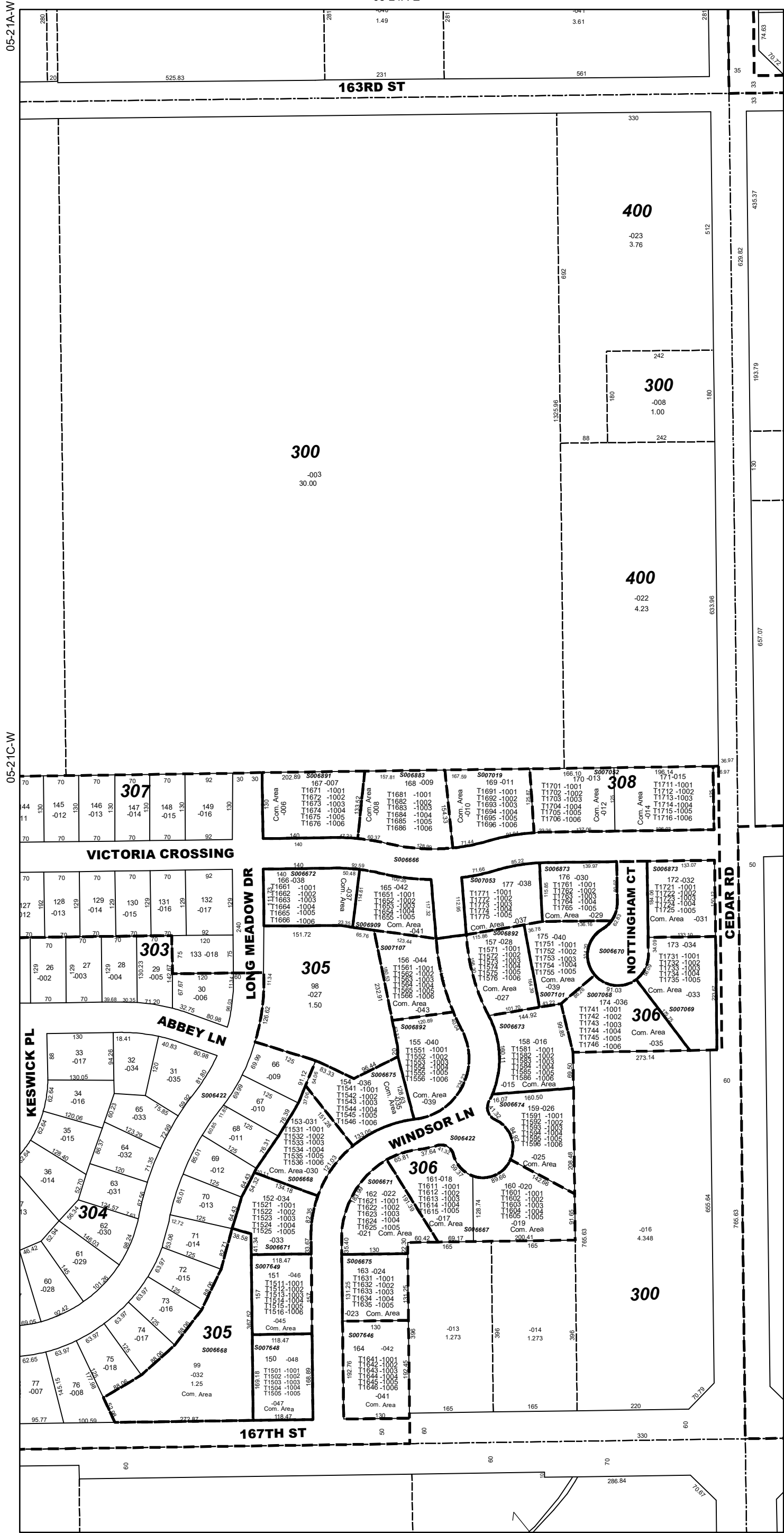
Map Page 05-21C-E

Homer Township
E.1/2 S.W.1/4 Sec.21 T.36N. R.11E.

05-21A-W

05-21A-E

05-21B-W



05-21C-W

05-21D-W

Subdivision List

- S006422**
Victoria Crossings Unit One
R99-087768
- S006666**
Victoria Crossings Unit 2
R2000-014063
- S006667**
Victoria Crossings Condos,
2nd Amdt. (Lots 160 & 161)
R2000-074114
- S006668**
Victoria Crossings Condos
(Lot 99 & 153)
R2000-057272
- S006670**
Victoria Crossings Unit 3
R2000-073824
- S006671**
Victoria Crossings Condos,
1st Amdt. (Lots 152 & 162)
R2000-059916
- S006672**
Victoria Crossings Condo,
6th Amdt. (Lot 166)
R2000-135777
- S006673**
Victoria Crossings Condos,
4th Amdt. (Lot 158)
R2000-117372
- S006674**
Victoria Crossings Condos,
5th Amdt. (Lot 159)
R2000-128020
- S006675**
Victoria Crossings Condos,
3rd Amdt. (Lots 154 & 163)
R2000-110732
- S006873**
Victoria Crossings Condo,
14th Amdt. (Lot 172 & 176)
R2001-152136
- S006883**
Victoria Crossings Condo,
11th Amdt. (Lot 168)
R2001-098569
- S006891**
Victoria Crossings Condos,
7th Amdt. (Lot 167)
R2001-053360
- S006892**
Victoria Crossings Condos,
8th Amdt. (Lots 155 & 157)
R2001-070575
- S006909**
Victoria Crossings Condo,
9th Amdt. (Lot 165)
R2001-085071
- S007019**
Victoria Crossings Condo,
10th Amdt. (Lot 169)
R2001-094047
- S007052**
Victoria Crossings Condo,
12th Amdt. (Lots 170 & 171)
R2001-125979
- S007053**
Victoria Crossings Condo,
13th Amdt. (Lot 177)
R2001-139002
- S007068**
Victoria Crossings Condos,
16th Amdt. (Lot 174)
R2001-170231
- S007069**
Victoria Crossings Condos,
15th Amdt. (Lot 173)
R2001-163872
- S007101**
Victoria Crossings Condo,
17th Amdt. (Lot 175)
R2001-180923
- S007107**
Victoria Crossings Condo,
18th Amdt. (Lot 156)
R2002-032126
- S007646**
Victoria Crossings Condos,
31st Amdt. (Lot 164)
R2003-011134
- S007648**
Victoria Crossings Condos,
34th Amdt. (Lot 150)
R2003-110899
- S007649**
Victoria Crossings Condos,
32nd Amdt. (Lot 151)
R2003-015813

1 inch = 200 feet
Plot Date: Jul 18 2022

05-28A-W

05-28A-E

05-28B-W