



**Jennifer Bertino-Tarrant**  
County Executive  
**Dale D. Butalla**  
Supervisor of Assessments

Disclaimer of Warranties and Accuracy of Data  
Although the data developed by Will County for its maps, websites, and Geographic Information System has been produced and processed from sources believed to be reliable, no warranty, expressed or implied, is made regarding accuracy, adequacy, completeness, legality, reliability or usefulness of any information. This disclaimer applies to both isolated and aggregate uses of the information. The County and elected officials provide this information on an "as is" basis. All warranties of any kind, express or implied, including but not limited to the implied warranties of merchantability, fitness for a particular purpose, freedom from contamination by computer viruses or hackers and non-infringement of proprietary rights are disclaimed. Changes may be periodically made to the information herein; these changes may or may not be incorporated in any new version of the publication. If you have obtained information from any of the County web pages from a source other than the County pages, be aware that electronic data can be altered subsequent to original distribution. Data can also quickly become out of date. It is recommended that careful attention be paid to the contents of any data, and that the originator of the data or information be contacted with any questions regarding appropriate use. Please direct any questions to Mapping & Planning at (815) 740-4664.

# Will County, Illinois

Tax Assessment Map  
Revised for the 2023 Assessment  
Copyrighted 2023 by Will County GIS Division

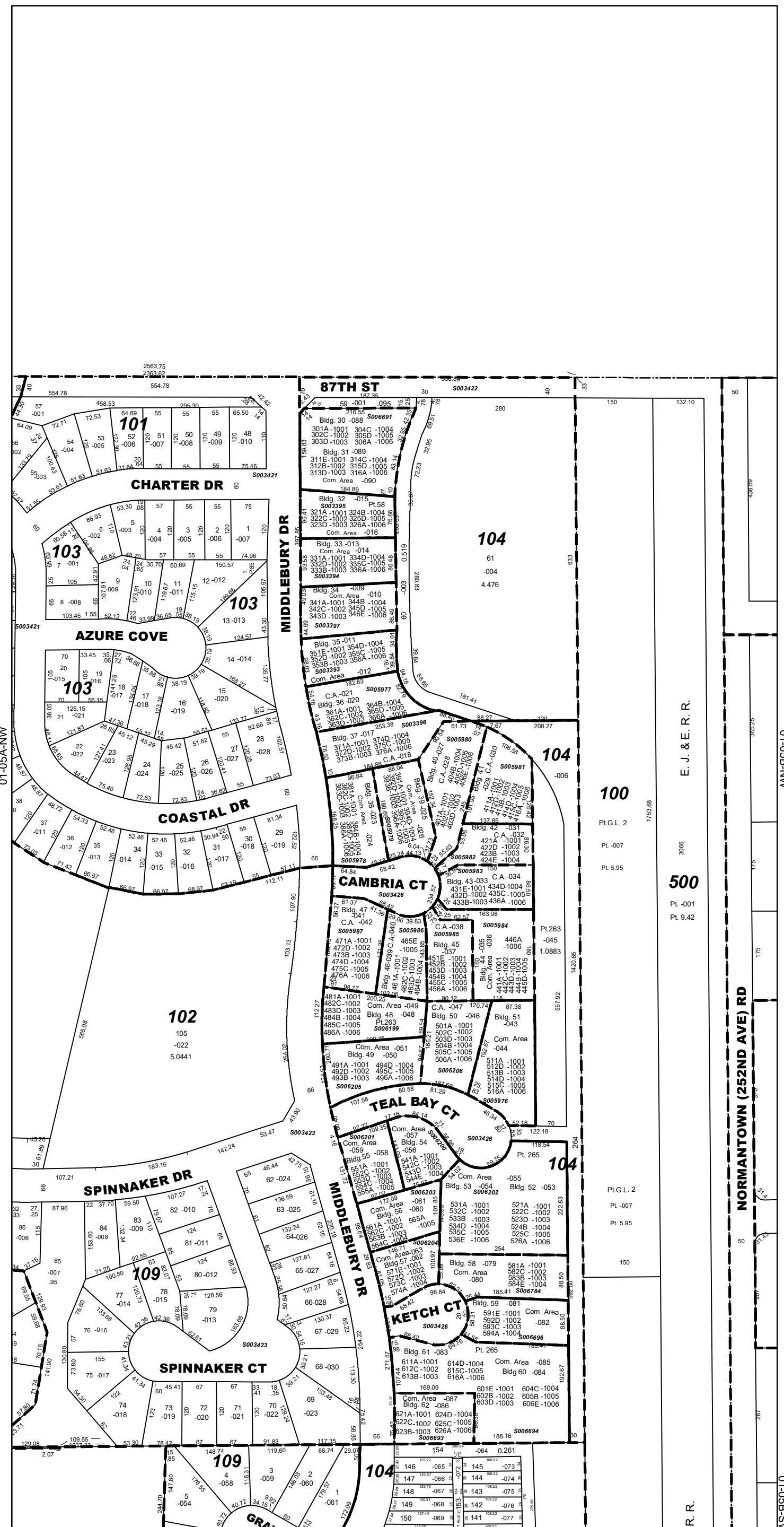
Map Page 01-05A-NE

Wheatland Township  
N.1/2 E.1/2 N.W.1/4 Sec.5 T.37N. R.9E.

DUPAGE COUNTY

Subdivision List

- S003393**  
The Coves of Harbor Springs  
Condos, 1st Amdt Bldg. 35  
(Pt. Lot 58)  
R97-077026 / ReR97-089651
- S003394**  
The Coves of Harbor Springs  
Condos, 2nd Amdt Bldg. 33  
(Pt. Lot 58)  
R97-079988 / ReR97-089652
- S003395**  
The Coves of Harbor Springs  
Condos, 3rd Amdt Bldg. 32  
(Pt. Lot 58)  
R97-091282
- S003396**  
The Coves of Harbor Springs  
Condos, 4th Amdt Bldg. 37  
(Pt. Lot 58)  
R97-100835
- S003397**  
The Coves of Harbor Springs  
Condos, Bldg. 34 (Pt. Lot 58)  
(Pt. Lot 58)  
R97-062631 / ReR97-067952
- S003421**  
Harbor Springs Unit #1  
R96-109374
- S003422**  
Harbor Springs Unit #2  
R96-109376
- S003423**  
Harbor Springs Unit #3  
R97-033991
- S003426**  
Harbor Springs Unit #6  
R97-079196
- S005976**  
The Coves of Harbor Springs  
Condos, 16th Amdt., Bldg. 51  
(Pt. Lot 263)  
R98-141132
- S005977**  
The Coves of Harbor Springs  
Condos, 5th Amdt., Bldg. 36  
(Pt. Lot 58)  
R98-004546
- S005978**  
The Coves of Harbor Springs  
Condos, 6th Amdt., Bldg. 38  
(Pt. Lot 263)  
R98-014143
- S005979**  
The Coves of Harbor Springs  
Condos, 7th Amdt., Bldg. 39  
(Pt. Lot 263)  
R98-023161
- S005980**  
The Coves of Harbor Springs  
Condos, 8th Amdt., Bldg. 40  
(Pt. Lot 263)  
R98-034531
- S005981**  
The Coves of Harbor Springs  
Condos, 9th Amdt., Bldg. 41  
(Pt. Lot 263)  
R98-046570
- S005982**  
The Coves of Harbor Springs  
Condos, 10th Amdt., Bldg. 42  
(Pt. Lot 263)  
R98-061822
- S005983**  
The Coves of Harbor Springs  
Condos, 11th Amdt., Bldg. 43  
(Pt. Lot 263)  
R98-079025
- S005984**  
The Coves of Harbor Springs  
Condos, 12th Amdt., Bldg. 44  
(Pt. Lot 263)  
R98-088489
- S005985**  
The Coves of Harbor Springs  
Condos, 13th Amdt., Bldg. 45  
(Pt. Lot 263)  
R98-107349
- S005986**  
The Coves of Harbor Springs  
Condos, 14th Amdt., Bldg. 46  
(Pt. Lot 263)  
R98-119928
- S005987**  
The Coves of Harbor Springs  
Condos, 15th Amdt., Bldg. 47  
(Pt. Lot 263)  
R98-128584
- S006199**  
The Coves of Harbor Springs  
Condos, 18th Amdt., Bldg. 48  
(Pt. Lot 263)  
R99-028902
- S006200**  
The Coves of Harbor Springs  
Condos, 21st Amdt., Bldg. 54  
(Pt. Lot 265)  
R99-097006
- S006201**  
The Coves of Harbor Springs  
Condos, 22nd Amdt., Bldg. 55  
(Pt. Lot 265)  
R99-122868
- S006202**  
The Coves of Harbor Springs  
Condos, 20th Amdt., Bldgs. 52  
& 53 (Pt. Lot 265)  
R99-070180
- S006205**  
The Coves of Harbor Springs  
Condos, 19th Amdt., Bldg. 49  
(Pt. Lot 263)  
R99-059087
- S006206**  
The Coves of Harbor Springs  
Condos, 17th Amdt., Bldg. 50  
(Pt. Lot 263)  
R99-019966
- S006691**  
The Coves of Harbor Springs  
Condos, 29th Amdt., Bldgs. 30  
& 31 (Pt. Lot 58)  
R2000-076247



E. J. & E. R. R.

NORMANTOWN (252ND AVE) RD

01-05A-SW

01-05A-SE

1 inch = 200 feet  
Plot Date: Jul 20 2023