

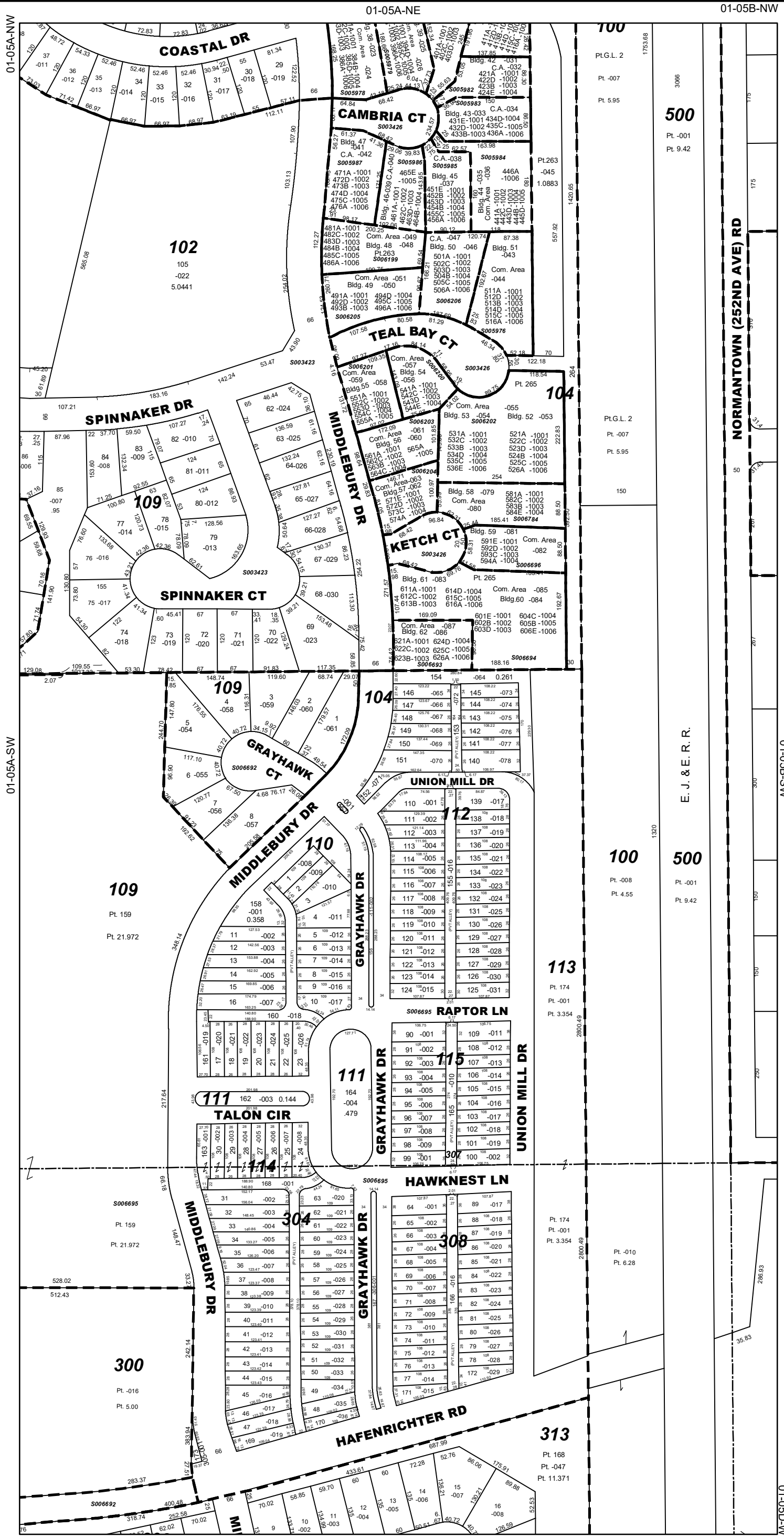


Jennifer Bertino-Tarrant
County Executive
Dale D. Butalla
Supervisor of Assessments

Disclaimer of Warranties and Accuracy of Data
Although the data developed by Will County for its maps, websites, and Geographic Information System has been produced and processed from sources believed to be reliable, no warranty, expressed or implied, is made regarding accuracy, adequacy, completeness, legality, reliability or usefulness of any information. This disclaimer applies to both isolated and aggregate uses of the information. The County and elected officials provide this information on an "as is" basis. All warranties of any kind, express or implied, including but not limited to the implied warranties of merchantability, fitness for a particular purpose, freedom from contamination by computer viruses or hackers and non-infringement of proprietary rights are disclaimed. Changes may be periodically made to the information herein; these changes may or may not be incorporated in any new version of the publication. If you have obtained information from any of the County web pages from a source other than the County pages, be aware that electronic data can be altered subsequent to original distribution. Data can also quickly become out of date. It is recommended that careful attention be paid to the contents of any data, and that the originator of the data or information be contacted with any questions regarding appropriate use. Please direct any questions to Mapping & Planning at (815) 740-4664.

Will County, Illinois
Tax Assessment Map
Revised for the 2023 Assessment
Copyrighted 2023 by Will County GIS Division

Map Page 01-05A-SE
Wheatland Township
S.1/2 E.1/2 N.W.1/4 Sec.5 T.37N. R.9E.



Subdivision List

S003423	Harbor Springs Unit #3 R97-033991
S003426	Harbor Springs Unit #6 R97-079196
S006200	The Coves of Harbor Springs Condos, 21st Amdt., Bldg. 54 (Pt. Lot 265) R99-097006
S006201	The Coves of Harbor Springs Condos, 22nd Amdt., Bldg. 55 (Pt. Lot 265) R99-122868
S006202	The Coves of Harbor Springs Condos, 20th Amdt., Bldgs. 52 & 53 (Pt. Lot 265) R99-070180
S006203	The Coves of Harbor Springs Condos, 23rd Amdt., Bldg. 56 (Pt. Lot 265) R99-136595
S006204	The Coves of Harbor Springs Condos, 24th Amdt., Bldg. 57 (Pt. Lot 265) R99-146124
S006692	Gray Hawk Unit 2 R2000-058290
S006693	The Coves of Harbor Springs Condos, 27th Amdt., Bldg. 62 (Pt. Lot 265) R2000-052898
S006694	The Coves of Harbor Springs Condos, 27th Amdt., Bldgs. 60 & 61 (Pt. Lot 265) R2000-035199
S006695	Gray Hawk Unit 1 R2000-058289
S006696	The Coves of Harbor Springs Condos, 26th Amdt., Bldg. 59 (Pt. Lot 265) R2000-024748
S006784	The Coves of Harbor Springs Condos, 25th Amdt., Bldg. 58 (Pt. Lot 265) R2000-014022

1 inch = 200 feet
Plot Date: Jul 20 2023