



**Jennifer Bertino-Tarrant**  
County Executive  
**Dale D. Butalla**  
Supervisor of Assessments

Disclaimer of Warranties and Accuracy of Data  
Although the data developed by Will County for its maps, websites, and Geographic Information System has been produced and processed from sources believed to be reliable, no warranty, expressed or implied, is made regarding accuracy, adequacy, completeness, legality, reliability or usefulness of any information. This disclaimer applies to both isolated and aggregate uses of the information. The County and elected officials provide this information on an "as is" basis. All warranties of any kind, express or implied, including but not limited to the implied warranties of merchantability, fitness for a particular purpose, freedom from contamination by computer viruses or hackers and non-infringement of proprietary rights are disclaimed. Changes may be periodically made to the information herein; these changes may or may not be incorporated in any new version of the publication. If you have obtained information from any of the County web pages from a source other than the County pages, be aware that electronic data can be altered subsequent to original distribution. Data can also quickly become out of date. It is recommended that careful attention be paid to the contents of any data, and that the originator of the data or information be contacted with any questions regarding appropriate use. Please direct any questions to Mapping & Planning at (815) 740-4664.

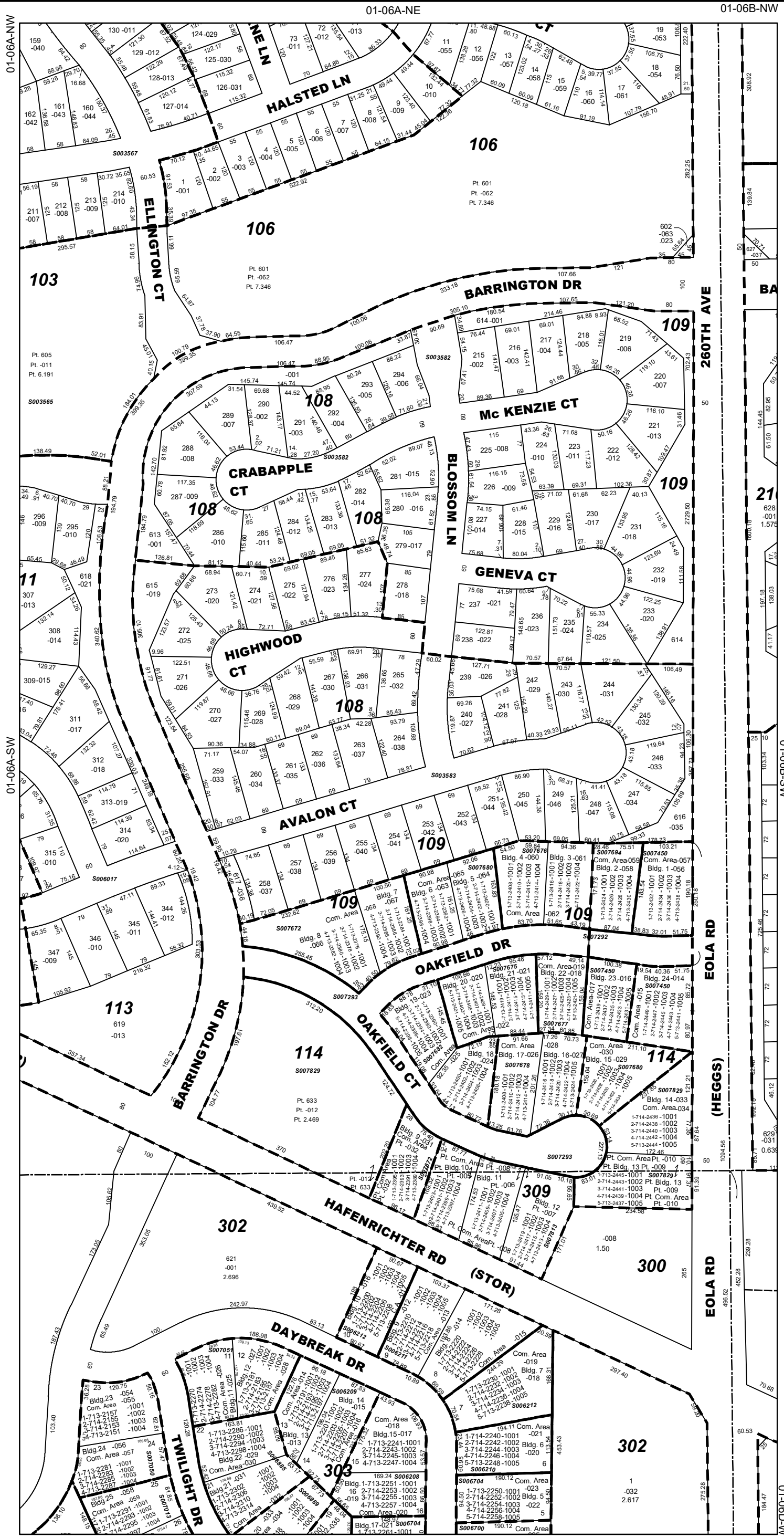
# Will County, Illinois

## Tax Assessment Map

Revised for the 2023 Assessment  
Copyrighted 2023 by Will County GIS Division

Map Page 01-06A-SE

Wheatland Township  
S1/2 E1/2 Frc. NW1/4 Sec.6 T.37N. R.9E.



**Subdivision List**

- S003565**  
The Wheatlands Unit 1A PUD  
R96-114259
- S003582**  
The Wheatlands Unit 3A PUD  
R97-005011
- S003583**  
The Wheatlands Unit 3B PUD  
R97-057633
- S006017**  
Wheatlands Unit 4A, The  
R98-121160
- S006213**  
Ogden Pointe at The Wheatlands  
R99-059451
- S007292**  
Ogden Pointe at The Wheatlands  
IV-Unit 1  
R2002-092900
- S007293**  
Ogden Pointe at The Wheatlands  
IV-Unit 2  
R2002-092901
- S007448**  
Ogden Pointe at The Wheatlands  
IV Condos, 1st Amdt. Bldg. 23  
R2002-220736
- S007450**  
Ogden Pointe at The Wheatlands  
IV Condos, Bldgs. 1 & 24  
R2002-179857
- S007672**  
Ogden Pointe at the Wheatlands  
IV Condos, 9th Amdt.  
Bldgs. 7, 8 & 9  
R2003-256983
- S007675**  
Ogden Pointe at the Wheatlands  
IV Condos, 5th Amdt.  
Bldgs. 20 & 21  
R2003-123880
- S007676**  
Ogden Pointe at the Wheatlands  
IV Condos, 3rd Amdt.  
Bldgs. 3 & 4  
R2003-094450
- S007677**  
Ogden Pointe at the Wheatlands  
IV Condos, 4th Amdt.  
Bldg. 22  
R2003-111513
- S007678**  
Ogden Pointe at the Wheatlands  
IV Condos, 7th Amdt.  
Bldgs. 16 & 17  
R2003-194714
- S007680**  
Ogden Pointe at the Wheatlands  
IV Condos, 8th Amdt.  
Bldgs. 5, 6 & 15  
R2003-220738
- S007682**  
Ogden Pointe at the Wheatlands  
IV Condos, 6th Amdt. Bldgs.  
18 & 19 (& Special Amdt # 2)  
R2003-163911
- S007694**  
Ogden Pointe at the Wheatlands  
IV Condos, 2nd Amdt.  
Bldg. 2  
R2003-010399
- S007813**  
Ogden Pointe at the Wheatlands  
IV Condos, 10th Amdt.  
Bldgs. 10, 11 & 12  
R2003-289792
- S007829**  
Ogden Pointe at the Wheatlands  
IV Condos, 11th Amdt.  
Bldgs. 13, 14 & Lot 633  
R2003-304193

1 inch = 200 feet  
Plot Date: Jul 20 2023