



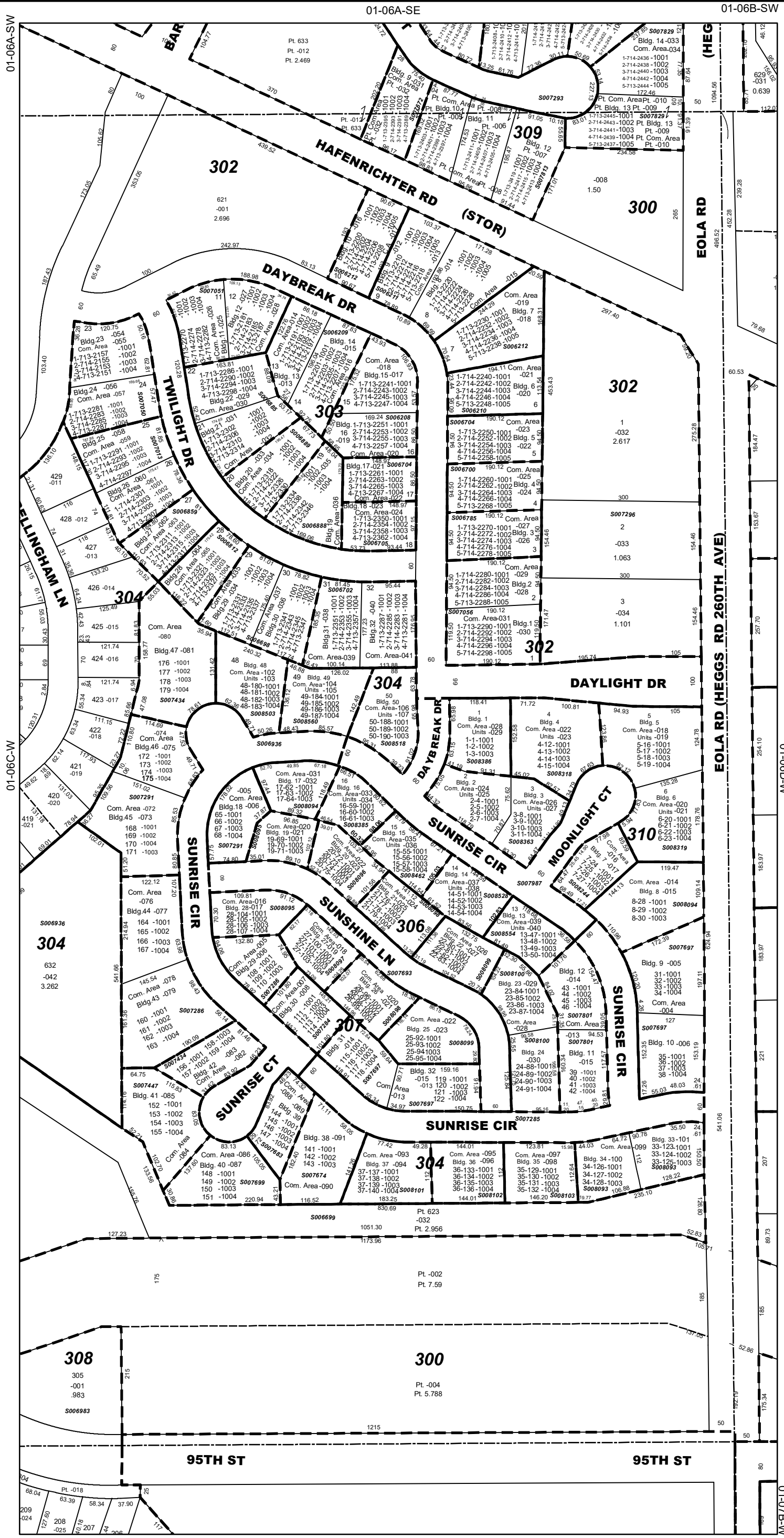
Jennifer Bertino-Tarrant
County Executive
Dale D. Butalla
Supervisor of Assessments

Disclaimer of Warranties and Accuracy of Data
Although the data developed by Will County for its maps, websites, and Geographic Information System has been produced and processed from sources believed to be reliable, no warranty, expressed or implied, is made regarding accuracy, adequacy, completeness, legality, reliability or usefulness of any information. This disclaimer applies to both isolated and aggregate uses of the information. The County and elected officials provide this information on an "as is" basis. All warranties of any kind, express or implied, including but not limited to the implied warranties of merchantability, fitness for a particular purpose, freedom from contamination by computer viruses or hackers and non-infringement of proprietary rights are disclaimed. Changes may be periodically made to the information herein; these changes may or may not be incorporated in any new version of the publication. If you have obtained information from any of the County web pages from a source other than the County pages, be aware that electronic data can be altered subsequent to original distribution. Data can also quickly become out of date. It is recommended that careful attention be paid to the contents of any data, and that the originator of the data or information be contacted with any questions regarding appropriate use. Please direct any questions to Mapping & Planning at (815) 740-4664.

Will County, Illinois

Tax Assessment Map

Revised for the 2023 Assessment
Copyrighted 2023 by Will County GIS Division



- Subdivision List**
- S006208**
Ogden Pointe at The Wheatlands
Condos, 3rd Amdt.,
(Bldgs. 15 & 16)
R99-137883
 - S006209**
Ogden Pointe at The Wheatlands
Condos, 2nd Amdt.,
(Bldgs 13 & 14)
R99-125096
 - S006210**
Ogden Pointe at The Wheatlands
Condos, 4th Amdt.,
(Bldg. 6)
R99-149817
 - S006211**
Ogden Pointe at The Wheatlands
Condos (Bldgs 8 & 9)
R99-065917
 - S006212**
Ogden Pointe at The Wheatlands
Condos, 1st Amdt.,
(Bldgs 7 & 10)
R99-074274
 - S006213**
Ogden Pointe at The Wheatlands
R99-059451
 - S006698**
Ogden Pointe at The Wheatlands
Condos, 10th Amdt.,
(Bldgs 29 & 30)
R2000-126738
 - S006699**
Wheatlands Unit 5
R2000-019210
 - S006700**
Ogden Pointe at The Wheatlands
Condos, 7th Amdt., (Bldg 4)
R2000-058319
 - S006702**
Ogden Pointe at The Wheatlands
Condos, 9th Amdt.,
(Bldgs 31 & 32)
R2000-109305
 - S006704**
Ogden Pointe at The Wheatlands
Condos, 5th Amdt.,
(Bldgs 5 & 17)
R2000-009412
 - S006705**
Ogden Pointe at The Wheatlands
Condos, 6th Amdt.,
(Bldg 18 & Lot 621)
R2000-020877
 - S006785**
Ogden Pointe at The Wheatlands
Condos, 8th Amdt.,
(Bldg 3)
R2000-084548
 - S006812**
Ogden Pointe at The Wheatlands
Condos, 11th Amdt., (Bldg 28)
R2001-014971
 - S006817**
Amber Fields Unit 1
R2001-017373
 - S006859**
Ogden Pointe at The Wheatlands
Condos, 12th Amdt., (Bldg 27)
R2001-040626
 - S006885**
Ogden Pointe at The Wheatlands
Condos, 15th Amdt.,
(Bldgs 21 & 22)
R2001-084228
 - S006888**
Ogden Pointe at The Wheatlands
Condos, 13th Amdt., (Bldg 19)
R2001-050899
 - S006889**
Ogden Pointe at The Wheatlands
Condos, 14th Amdt., (Bldg 20)
R2001-066808
 - S006936**
Harvest Run at the Wheatlands,
Unit 2
R2001-152298
 - S006983**
Amber Fields Unit 2
R2001-096021
 - S007013**
Ogden Pointe at The Wheatlands
Condos, 16th Amdt.,
(Bldgs 25 & 26)
R2001-105596
 - S007050**
Ogden Pointe at The Wheatlands
Condos, 17th Amdt., (Bldgs 23 & 24)
R2001-124789
 - S007051**
Ogden Pointe at The Wheatlands
Condos, 18th Amdt., (Bldgs 11 & 12)
R2001-142879
 - S007056**
Ogden Pointe at The Wheatlands
Condos, 19th Amdt.,
(Bldgs 1 & 2)
R2001-161096
 - S007284**
Summit Fields at The
Wheatlands Condos,
2nd Amdt. Bldg. 30
R2002-156276
 - S007285**
Harvest Run at the Wheatlands,
Unit 1
R2002-146839
 - S007286**
Summit Fields at The
Wheatlands Condos,
1st. Amdt. Bldgs 29, 43 & 44
R2002-139807
 - S007291**
Summit Fields at The
Wheatlands Condos,
Bldgs 18, 45 & 46
R2002-110084
 - S007293**
Ogden Pointe at The Wheatlands
IV-Unit 2
R2002-092901
 - S007296**
Loujake-Hafenrichter
Commercial Sub
R2002-108450
 - S007434**
Summit Fields at The
Wheatlands Condos,
3rd Amdt. Bldgs. 42 & 47
R2002-202952
 - S007447**
Summit Fields at The
Wheatlands Condos,
4th Amdt. Bldg. 41
R2002-224269
 - S007672**
Ogden Pointe at The Wheatlands
IV Condos, 9th Amdt.
Bldgs. 7, 8 & 9
R2003-256983
 - S007674**
Summit Fields at the

1 inch = 200 feet
Plot Date: Jul 20 2023