



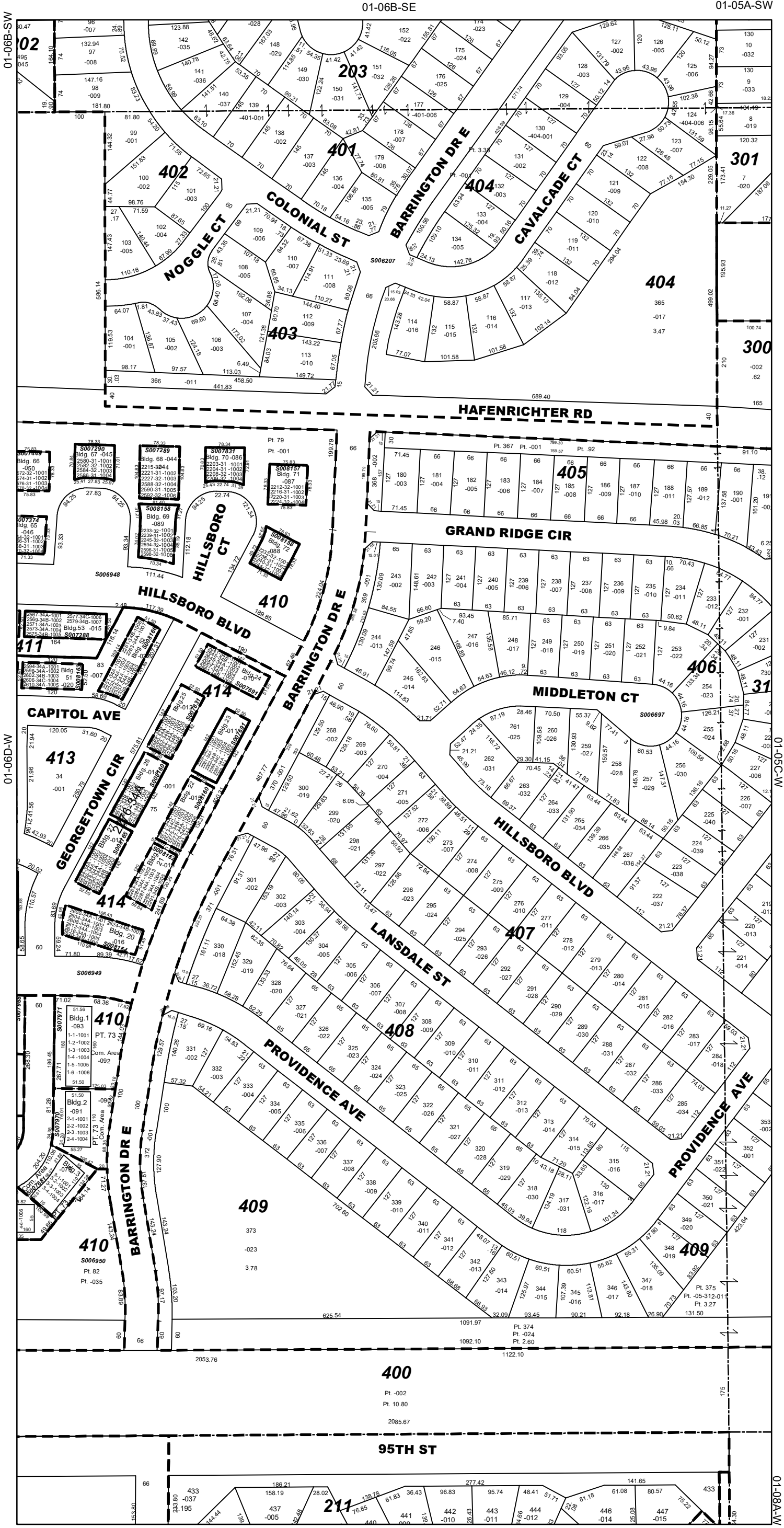
Jennifer Bertino-Tarrant
County Executive
Dale D. Butalla
Supervisor of Assessments

Disclaimer of Warranties and Accuracy of Data
Although the data developed by Will County for its maps, websites, and Geographic Information System has been produced and processed from sources believed to be reliable, no warranty, expressed or implied, is made regarding accuracy, adequacy, completeness, legality, reliability or usefulness of any information. This disclaimer applies to both isolated and aggregate uses of the information. The County and elected officials provide this information on an "as is" basis. All warranties of any kind, express or implied, including but not limited to the implied warranties of merchantability, fitness for a particular purpose, freedom from contamination by computer viruses or hackers and non-infringement of proprietary rights are disclaimed. Changes may be periodically made to the information herein; these changes may or may not be incorporated in any new version of the publication. If you have obtained information from any of the County web pages from a source other than the County pages, be aware that electronic data can be altered subsequent to original distribution. Data can also quickly become out of date. It is recommended that careful attention be paid to the contents of any data, and that the originator of the data or information be contacted with any questions regarding appropriate use. Please direct any questions to Mapping & Planning at (815) 740-4664.

Will County, Illinois
Tax Assessment Map
Revised for the 2023 Assessment
Copyrighted 2023 by Will County GIS Division

Map Page 01-06D-E

Wheatland Township
E.1/2 S.E. 1/4 Sec.6 T.37N. R.9E.



Subdivision List

- S006207**
Barrington Ridge Unit 1
R99-124392
- S006697**
Barrington Ridge Unit 3
R2000-075278
- S006948**
Washington Square Unit 1
R2001-122013
- S006949**
Washington Square Unit 2
R2001-122014
- S006950**
Washington Square Unit 3
R2001-122015
- S007288**
Washington Square at
Barrington Ridge Condos,
1st Amdt. Bldg. 53
R2002-093287
- S007289**
Washington Square at
Barrington Ridge Condos,
Bldgs 55,56 & 68
R2002-063929
- S007290**
Washington Square at
Barrington Ridge Condos,
4th Amdt. Bldgs.47 & 67
R2002-160433
- S007681**
Georgetown Commons at
Washington Square Condos, 3rd
Amdt. (Lot 3 & Prt. Lot 73;
Lot 10 & Prt. Lot 74 of
Unit 3)
R2003-236470
- S007691**
Washington Square at
Barrington Ridge Condos, 15th
Amdt. Bldgs. 23, 24, 57 & 58
R2003-272373
- S007831**
Washington Square at
Barrington Ridge Condos, 16th
Amdt. Bldgs. 25 & 70
R2003-304783
- S007970**
Georgetown Commons at
Washington Square Condos,
12th Amdt. (Lot 2 & Prt.
of Lot 73 of Unit 3)
R2004-168499
- S007971**
Georgetown Commons at
Washington Square Condos,
13th Amdt. (Lots 1 & Prt.
Lot 73 of Unit 3)
R2004-191232
- S008157**
Washington Square at
Barrington Ridge Condos,
17th Amdt. Bldg. 71
R2004-005012
- S008158**
Washington Square at
Barrington Ridge Condos,
18th Amdt. Bldgs.
39,54,69 & 72
R2004-025142
- S008160**
Washington Square at
Barrington Ridge Condos,
20th Amdt. Bldgs. 22 & 26
R2004-047397
- S008162**
Washington Square at
Barrington Ridge Condos,
22nd Amdt. Bldgs. 21 & 36
R2004-102160
- S008163**
Washington Square at
Barrington Ridge Condos,
23rd Amdt. Bldg 51
R2004-125779
- S008164**
Washington Square at
Barrington Ridge Condos,
24th Amdt. Bldg 20
R2004-152989
- S008165**
Washington Square at
Barrington Ridge Condos,
25th Amdt. Bldg 27
R2004-186478
- S008166**
Washington Square at
Barrington Ridge Condos,
26th Amdt. Bldgs 35 & 52
R2004-197668

1 inch = 200 feet
Plot Date: Jul 20 2023