



Jennifer Bertino-Tarrant
County Executive
Dale D. Butalla
Supervisor of Assessments

Disclaimer of Warranties and Accuracy of Data
Although the data developed by Will County for its maps, websites, and Geographic Information System has been produced and processed from sources believed to be reliable, no warranty, expressed or implied, is made regarding accuracy, adequacy, completeness, legality, reliability or usefulness of any information. This disclaimer applies to both isolated and aggregate uses of the information. The County and elected officials provide this information on an "as is" basis. All warranties of any kind, express or implied, including but not limited to the implied warranties of merchantability, fitness for a particular purpose, freedom from contamination by computer viruses or hackers and non-infringement of proprietary rights are disclaimed. Changes may be periodically made to the information herein; these changes may or may not be incorporated in any new version of the publication. If you have obtained information from any of the County web pages from a source other than the County pages, be aware that electronic data can be altered subsequent to original distribution. Data can also quickly become out of date. It is recommended that careful attention be paid to the contents of any data, and that the originator of the data or information be contacted with any questions regarding appropriate use. Please direct any questions to Mapping & Planning at (815) 740-4664.

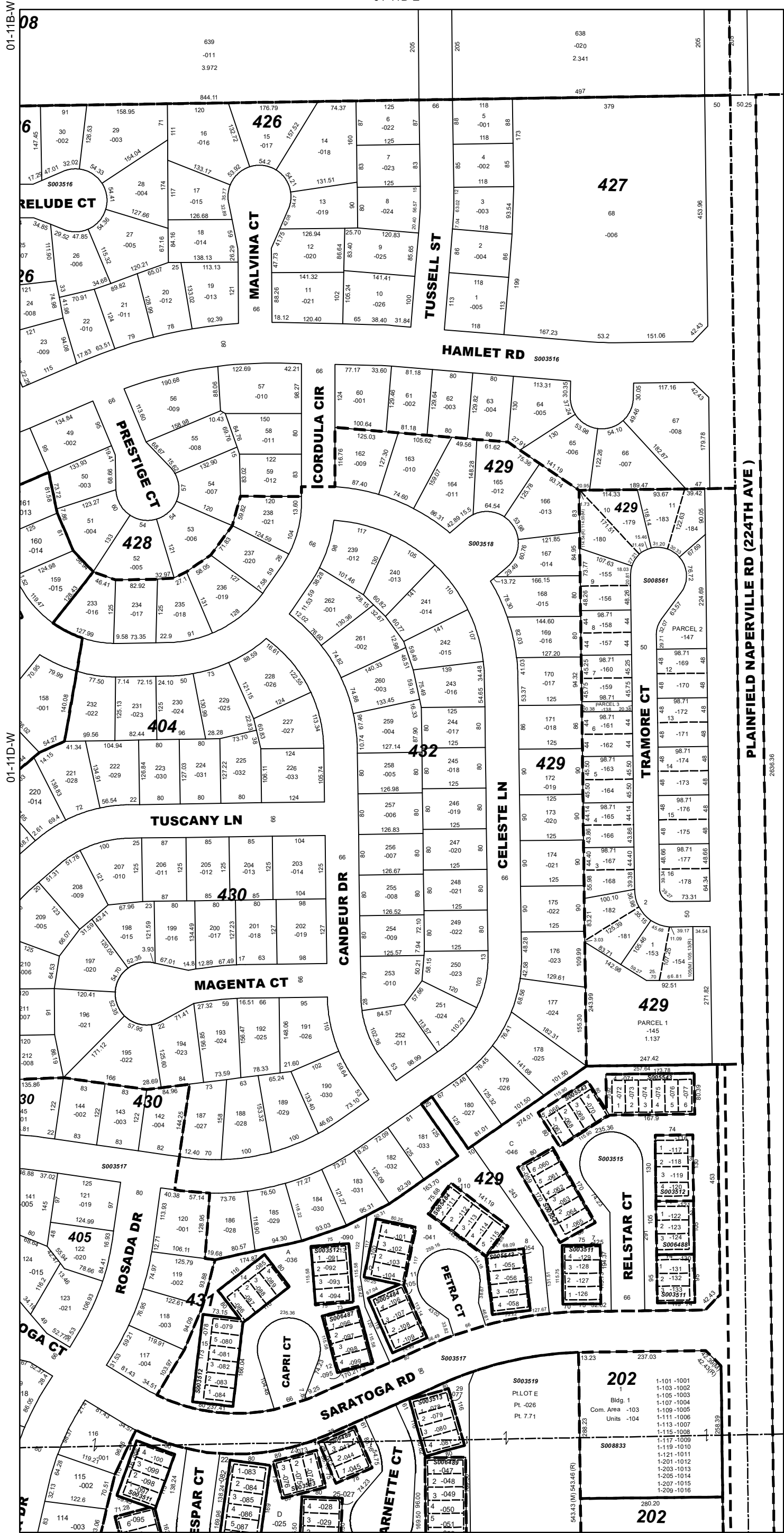
Will County, Illinois
Tax Assessment Map
Revised for the 2023 Assessment
Copyrighted 2023 by Will County GIS Division

Map Page 01-11D-E
Wheatland Township
E.1/2 S.E. 1/4 Sec.11 T.37N. R.9E.

01-11B-W

01-11B-E

01-12A-W



Subdivision List

- S003511**
Rosehill Farm Townhomes
10th Amdt. (Lots 1, 7 & 16)
R97-035223
- S003512**
Rosehill Farm Townhomes
of Unit 1, 3rd Amdt.,
Lots 3,13,14 & 15
R95-022007
- S003513**
Rosehill Farm Townhomes
Unit #2, 7th Amdt.
(Lots 18, 19, 20, 21, 23 & 29)
R96-013688
- S003515**
Rosehill Farm Townhomes #1
R94-064821
- S003516**
Rosehill Farm Unit 1
R90-031868
- S003517**
Rosehill Farm Unit 2
R92-049863
- S003518**
Rosehill Farm Unit 3
R93-080701
- S003519**
Rosehill Farms Townhomes #2
R95-027169
Certificate of Correction
R2020-061957
- S005484**
Rosehill Farm Townhomes of
Unit 1, 1st Amdt.,
(Lots 9,10 & 11)
R94-110953
- S005543**
Rosehill Farm Townhomes of
Unit 1, (Lots 4,5,6 & 8)
R94-099362
- S006487**
Rosehill Farm Townhomes of
Unit 1, 2nd Amdt., (Lot 12)
R95-004465
- S006488**
Rosehill Farm Townhomes of
Unit 1, 4th Amdt., (Lot 2)
R95-058089
- S006489**
Rosehill Farm Townhomes of
Unit 2, 6th Amdt., (Lots 24,
26 & 28)
R95-089207
- S008561**
Tramore Sub
R2005-211708
- S008833**
Naperville South Commons
Condos (Lot 1)
R2006-175631

1 inch = 200 feet
Plot Date: Jul 20 2023