



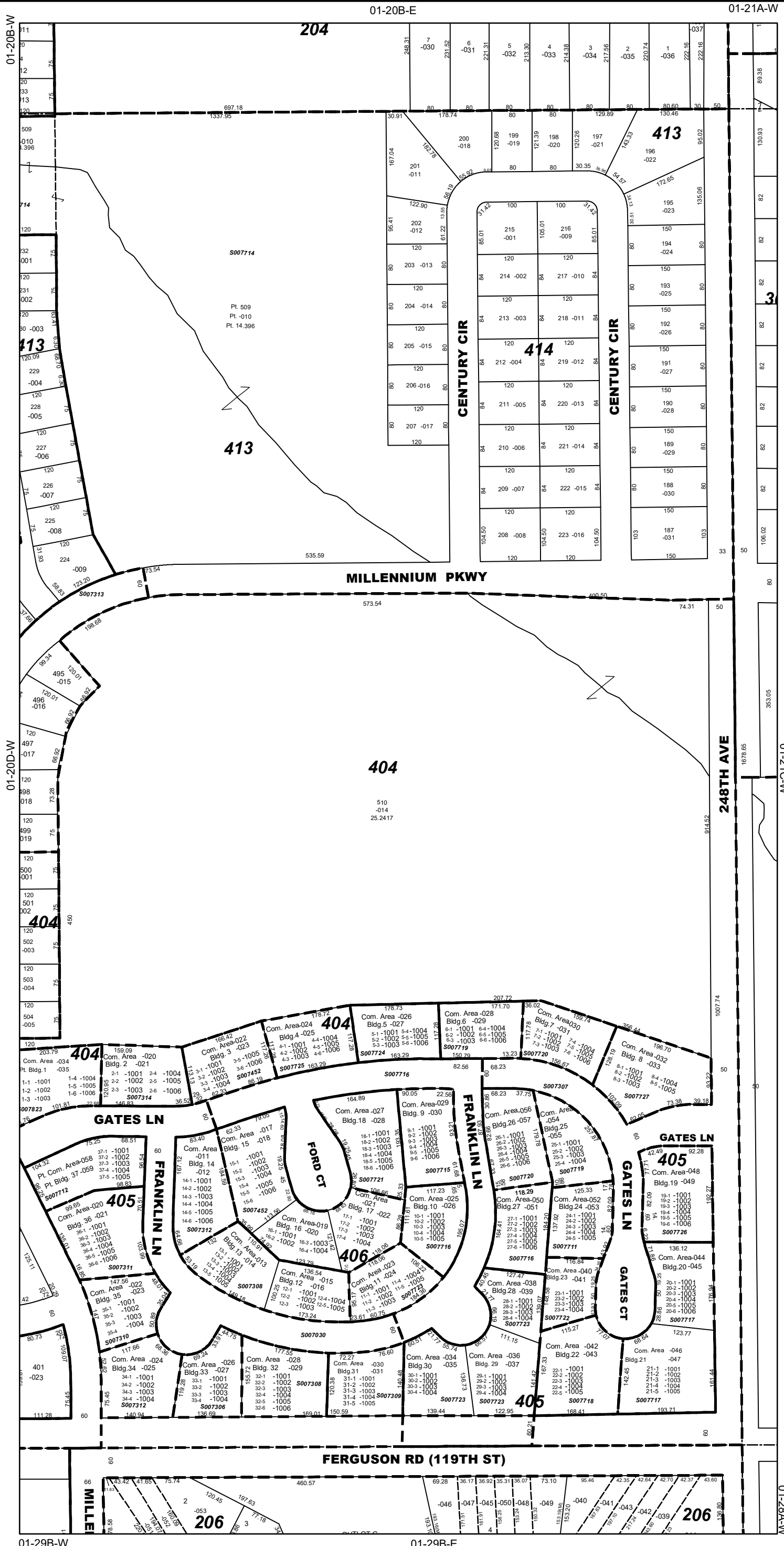
Jennifer Bertino-Tarrant
County Executive
Dale D. Butalla
Supervisor of Assessments

Disclaimer of Warranties and Accuracy of Data
Although the data developed by Will County for its maps, websites, and Geographic Information System has been produced and processed from sources believed to be reliable, no warranty, expressed or implied, is made regarding accuracy, adequacy, completeness, legality, reliability or usefulness of any information. This disclaimer applies to both isolated and aggregate uses of the information. The County and elected officials provide this information on an "as is" basis. All warranties of any kind, express or implied, including but not limited to the implied warranties of merchantability, fitness for a particular purpose, freedom from contamination by computer viruses or hackers and non-infringement of proprietary rights are disclaimed. Changes may be periodically made to the information herein; these changes may or may not be incorporated in any new version of the publication. If you have obtained information from any of the County web pages from a source other than the County pages, be aware that electronic data can be altered subsequent to original distribution. Data can also quickly become out of date. It is recommended that careful attention be paid to the contents of any data, and that the originator of the data or information be contacted with any questions regarding appropriate use. Please direct any questions to Mapping & Planning at (815) 740-4664.

Will County, Illinois
Tax Assessment Map
Revised for the 2023 Assessment
Copyrighted 2023 by Will County GIS Division

Map Page 01-20D-E

Wheatland Township
E.1/2 S.E. 1/4 Sec.20 T.37N. R.9E.



- Subdivision List
- S007028**
Century Trace Sub Unit 4A
R2001-125010
 - S007030**
Century Trace Sub Unit 5A
R2001-125012
 - S007304**
Century Trace Sub Unit 5B PUD
R2002-132818
 - S007306**
The Townes of Auburn Lakes
Condos, 5th Amdt. Bldg. 33
R2002-132817
 - S007307**
Century Trace Sub Unit 5C PUD
R2002-132819
 - S007308**
The Townes of Auburn Lakes
6th Amdt. Bldgs. 12, 13 & 32
R2002-155686
 - S007309**
The Townes of Auburn Lakes
7th Amdt. Bldg. 31
R2002-155687
 - S007310**
The Townes of Auburn Lakes
Condos, 3rd Amdt. Bldg. 35
R2002-116198
 - S007311**
The Townes of Auburn Lakes
Condos, 2nd Amdt. Bldg. 36
R2002-096334
 - S007312**
The Townes of Auburn Lakes
Condos, 4th Amdt.
Bldgs. 14 & 34
R2002-116199
 - S007313**
Century Trace Sub Unit 4C PUD
R2002-119501
 - S007314**
The Townes of Auburn Lakes
Condos, 1st Amdt. Bldg. 2
R2002-077165 / R2002-096333
 - S007452**
The Townes of Auburn Lakes
8th Amdt. Bldgs 3,15,16 & 17
R2002-216552
 - S007711**
The Townes of Auburn Lakes
Condos, 14th Amdt. Bldg. 24
R2003-114946
 - S007712**
The Townes of Auburn Lakes
Condos, 23rd Amdt. Bldg. 37
R2003-274358
 - S007713**
Century Trace Sub Unit 4D
R2003-044559
 - S007714**
Century Trace Sub Unit 3
R2003-007104
 - S007715**
The Townes of Auburn Lakes
Condos, 18th Amdt. Bldg. 9
R2003-191542
 - S007716**
The Townes of Auburn Lakes
Condos, 13th Amdt. Bldgs.
10 & 27
R2003-114945
 - S007717**
The Townes of Auburn Lakes
Condos, 12th Amdt. Bldgs.
20 & 21
R2003-092938
 - S007718**
The Townes of Auburn Lakes
Condos, 11th Amdt. Bldg. 22
R2003-093996 / ReR2003-111354
 - S007719**
The Townes of Auburn Lakes
Condos, 20th Amdt. Bldgs.
R2003-247567
 - S007720**
The Townes of Auburn Lakes
Condos, 21st Amdt. Bldgs.
R2003-247568
 - S007721**
The Townes of Auburn Lakes
Condos, 16th Amdt. Bldg. 18
R2003-176925
 - S007722**
The Townes of Auburn Lakes
Condos, 10th Amdt. Bldg. 23
R2003-036800
 - S007723**
The Townes of Auburn Lakes
Condos, 9th Amdt. Bldgs 11,
R2003-036801
 - S007724**
The Townes of Auburn Lakes
Condos, 17th Amdt. Bldg. 5
R2003-176926
 - S007725**
The Townes of Auburn Lakes
Condos, 15th Amdt. Bldg. 4
R2003-176924
 - S007726**
The Townes of Auburn Lakes
Condos, 19th Amdt. Bldg. 19
R2003-191543
 - S007727**
The Townes of Auburn Lakes
Condos, 22nd Amdt. Bldg. 8
R2003-247569
 - S007823**
The Townes of Auburn Lakes
Condos, 24th Amdt. Bldg. 1
R2003-297993

1 inch = 200 feet
Plot Date: Jul 20 2023