



**Jennifer Bertino-Tarrant**  
County Executive  
**Dale D. Butalla**  
Supervisor of Assessments

Disclaimer of Warranties and Accuracy of Data  
Although the data developed by Will County for its maps, websites, and Geographic Information System has been produced and processed from sources believed to be reliable, no warranty, expressed or implied, is made regarding accuracy, adequacy, completeness, legality, reliability or usefulness of any information. This disclaimer applies to both isolated and aggregate uses of the information. The County and elected officials provide this information on an "as is" basis. All warranties of any kind, express or implied, including but not limited to the implied warranties of merchantability, fitness for a particular purpose, freedom from contamination by computer viruses or hackers and non-infringement of proprietary rights are disclaimed. Changes may be periodically made to the information herein; these changes may or may not be incorporated in any new version of the publication. If you have obtained information from any of the County web pages from a source other than the County pages, be aware that electronic data can be altered subsequent to original distribution. Data can also quickly become out of date. It is recommended that careful attention be paid to the contents of any data, and that the originator of the data or information be contacted with any questions regarding appropriate use. Please direct any questions to Mapping & Planning at (815) 740-4664.

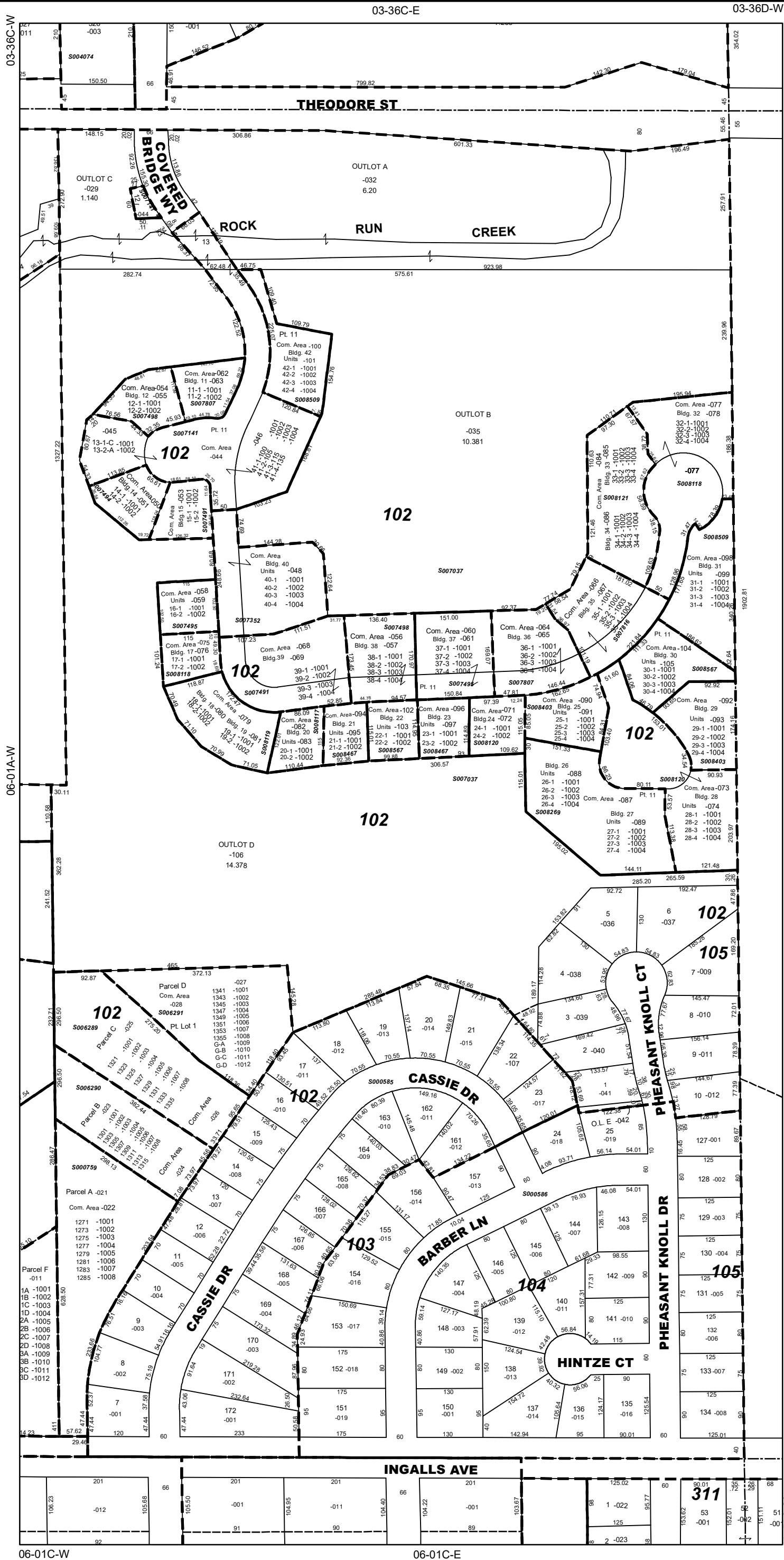
# Will County, Illinois

## Tax Assessment Map

Revised for the 2023 Assessment  
Copyrighted 2023 by Will County GIS Division

Map Page 06-01A-E

Troy Township  
E.1/2 N.W.1/4 Sec.1 T.35N. R.9E.



### Subdivision List

- S000585**  
Pleasant Knoll Sub Unit 2  
R87-026067
- S000586**  
Pleasant Knoll Sub Unit 3  
R88-020503
- S000736**  
Woodland Terrace Sub  
Unit No. 1  
R91-048225
- S000759**  
Woodland Terrace II Condos,  
Parcel A  
R98-121570
- S006289**  
Woodland Terrace II Condos,  
2nd Amdt. Parcel C  
R99-105918
- S006290**  
Woodland Terrace II Condos,  
1st Amdt. Parcel B  
R99-039978
- S006291**  
Woodland Terrace II Condos,  
3rd Amdt. Parcel D  
R99-121203
- S007037**  
The Preserve on the Rock Run  
Unit One  
R2001-131075
- S007141**  
The Preserve on the Rock Run  
Condos (Bldgs. 13 & 41)  
R2002-094208
- S007352**  
The Preserve on the Rock Run  
Condos, 1st Amdt.  
(Bldg. 40 - Prt. of Lot 11)  
R2002-121287
- S007491**  
The Preserve on the Rock Run  
Condos, 3rd Amdt. (Bldgs. 15 &  
39 - Prt. of Lot 11)  
R2003-068954
- S007494**  
The Preserve on the Rock Run  
Condos, 2nd Amdt. (Bldg. 14 -  
Prt. of Lot 11)  
R2003-038837
- S007495**  
The Preserve on the Rock Run  
Condos, 5th Amdt. (Bldgs 16 &  
37 - Prt. of Lot 11)  
R2003-195105
- S007498**  
The Preserve on the Rock Run  
Condos, 4th Amdt. (Bldg. 12)  
and (Bldg. 38 - Prt. Of  
Lot 11)  
R2003-113816
- S007807**  
The Preserve on the Rock Run  
Condos, 6th Amdt. (Bldgs. 11 &  
36 - Prt. of Lot 11)  
R2003-265433
- S008716**  
The Preserve on the Rock Run  
Condos, 7th Amdt. (Bldg. 35 -  
Prt. of Lot 11)  
R2003-291527
- S008117**  
The Preserve on the Rock Run  
Condos, 11th Amdt.  
(Bldg 20 - Prt. of Lot 11)  
R2004-204594
- S008118**  
The Preserve on the Rock Run  
Condos, 8th Amdt.  
(Bldgs 17 & 32- Prt. Lot 11)  
R2004-046978
- S008119**  
The Preserve on the Rock Run  
Condos, 10th Amdt.  
(Bldgs 18 & 19 - Prt. Lot 11)  
R2004-149757
- S008120**  
The Preserve on the Rock Run  
Condos, 12th Amdt.  
(Bldgs 24 & 28 - Prt. Lot 11)  
R2004-219820
- S008121**  
The Preserve on the Rock Run  
Condos, 9th Amdt.  
(Bldgs 33 & 34 - Prt. Lot 11)  
R2004-090772
- S008269**  
The Preserve on the Rock Run  
Condos, 13th Amdt.  
(Bldgs 26 & 27 - Prt. Lot 11)  
R2005-031032
- S008403**  
The Preserve on the Rock Run  
Condos, 14th Amdt. (Bldgs 25  
& 29 - Prt. Lot 11)  
R2005-107051
- S008467**  
The Preserve on the Rock Run  
Condos, 15th Amdt.  
(Bldgs 21 & 23 - Prt. Lot 11)  
R2005-152500
- S008509**  
The Preserve on the Rock Run  
Condos, 16th Amdt.  
(Bldgs 31 & 42 - Prt. Lot 11)  
R2005-178209
- S008567**  
The Preserve on the Rock Run  
Condos, 17th Amdt.  
(Bldgs 22 & 30 - Prt. Lot 11)  
R2005-221258

1 inch = 200 feet  
Plot Date: Jul 20 2023