



Jennifer Bertino-Tarrant
County Executive
Dale D. Butalla
Supervisor of Assessments

Disclaimer of Warranties and Accuracy of Data
Although the data developed by Will County for its maps, websites, and Geographic Information System has been produced and processed from sources believed to be reliable, no warranty, expressed or implied, is made regarding accuracy, adequacy, completeness, legality, reliability or usefulness of any information. This disclaimer applies to both isolated and aggregate uses of the information. The County and elected officials provide this information on an "as is" basis. All warranties of any kind, express or implied, including but not limited to the implied warranties of merchantability, fitness for a particular purpose, freedom from contamination by computer viruses or hackers and non-infringement of proprietary rights are disclaimed. Changes may be periodically made to the information herein; these changes may or may not be incorporated in any new version of the publication. If you have obtained information from any of the County web pages from a source other than the County pages, be aware that electronic data can be altered subsequent to original distribution. Data can also quickly become out of date. It is recommended that careful attention be paid to the contents of any data, and that the originator of the data or information be contacted with any questions regarding appropriate use. Please direct any questions to Mapping & Planning at (815) 740-4664.

Will County, Illinois

Tax Assessment Map

Revised for the 2023 Assessment
Copyrighted 2023 by Will County GIS Division

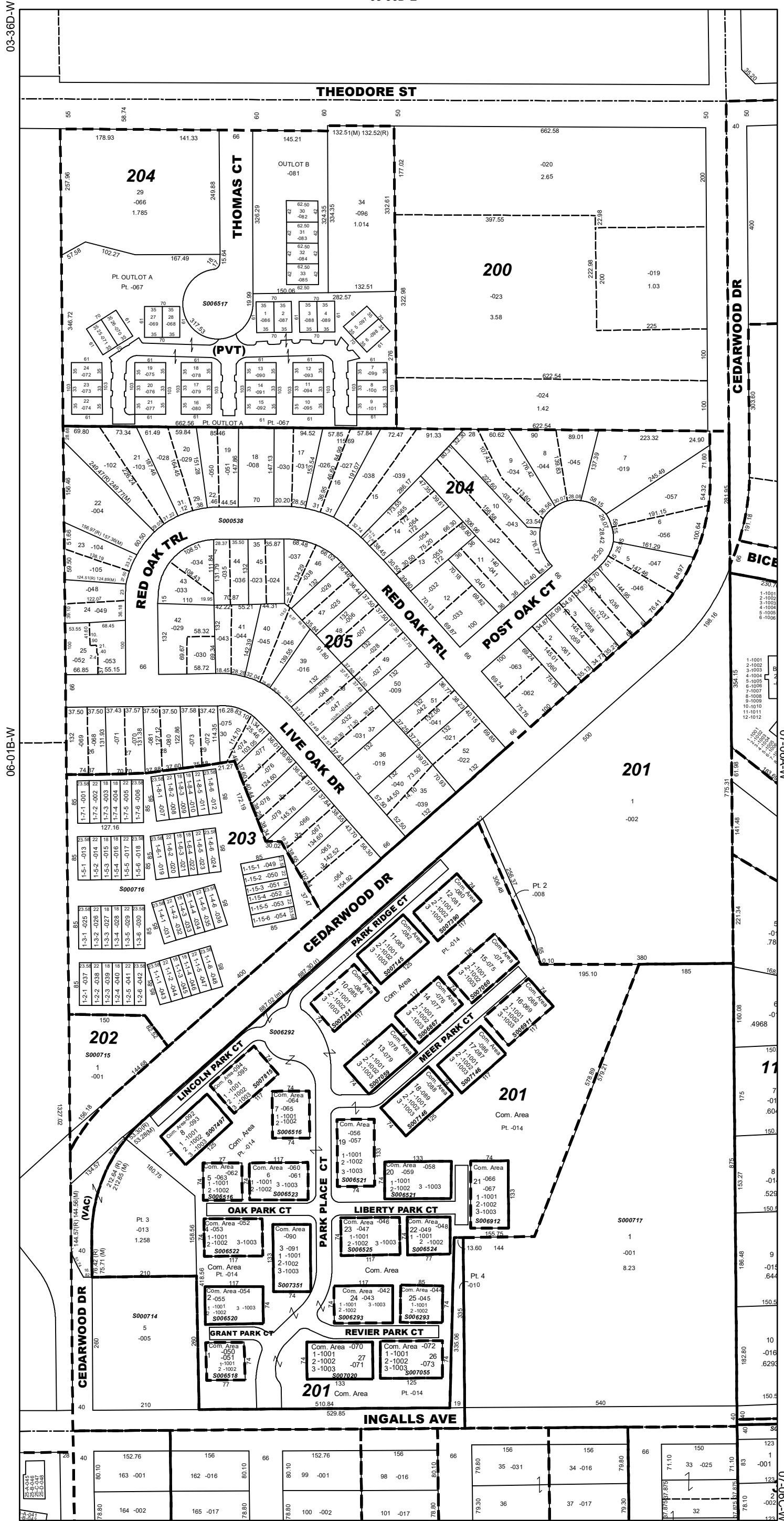
Map Page 06-01B-E

Troy Township
E.1/2 N.E.1/4 Sec.1 T.35N. R.9E.

03-36D-W

03-36D-E

04-31C-W



Subdivision List

- S000538
Oak Tree Village
R89-029360
- S000714
Vavrus 2nd Addn. to Crest Hill
R71-026619
- S000715
Vavrus 3rd Addn. to Crest Hill
R72-009996
- S000716
Vavrus 4th Addn. to
Crest Hill Unit No. 1
R72-013041
- S000717
Vavrus Addn. to Crest Hill
R71-011268
- S006292
Park Place on the Green PUD
R99-004938
- S006293
Park Place on the Green
Condos (Lots 24 & 25)
R99-126653
- S006516
Park Place on the Green
Condos, 8th Amdt., (Lots 5
& 7)
R2000-134326 / ReR2000-139873
- S006517
Reflection Heights PUD
R2000-103462
- S006518
Park Place on the Green
Condos, 3rd Amdt., (Lot 1)
R2000-060704
- S006520
Park Place on the Green
Condos, 5th Amdt., (Lot 2)
R2000-102182
- S006521
Park Place on the Green
Condos, 6th Amdt., (Lots 19
& 20)
R2000-108771
- S006522
Park Place on the Green
Condos, 4th Amdt., (Lot 4)
R2000-072218
- S006523
Park Place on the Green
Condos, 7th Amdt., (Lot 6)
R2000-127146
- S006524
Park Place on the Green
Condos, 2nd Amdt., (Lot 22)
R2000-031698
- S006525
Park Place on the Green
Condos, 1st Amdt., (Lot 23)
R2000-012066
- S006867
Park Place on the Green
Condos, 14th Amdt., (Lot 14)
R2001-134589
- S006911
Park Place on the Green
Condos, 10th Amdt., (Lot 16)
R2001-079699
- S006912
Park Place on the Green
Condos, 9th Amdt., (Lot 21)
R2001-046523
- S007020
Park Place on the Green
Condos, 11th Amdt., (Lot 27)
R2001-095639
- S007055
Park Place on the Green
Condos, 12th Amdt., (Lot 26)
R2001-115868
- S007059
Park Place on the Green
Condos, 15th Amdt., (Lot 13)
R2001-161181
- S007060
Park Place on the Green
Condos, 13th Amdt. (Lot 15)
R2001-125977
- S007145
Park Place on the Green
Condos, 17th Amdt (Lot 11)
R2002-084137
- S007146
Park Place on the Green
Condos, 16th Amdt.
(Lots 17 & 18)
R2002-007431 / ReR2002-025175
- S007351
Park Place on the Green
Condos, 19th Amdt.
(Lots 3 & 10)
R2002-185494
- S007390
Park Place on the Green
Condos, 18th Amdt. (Lot 12)
R2002-122494
- S007497
Park Place on the Green
Condos, 20th Amdt. (Lot 8)
R2003-131924
- S007815
Park Place on the Green
Condos, 21st Amdt. (Lot 9)
R2003-291459

1 inch = 200 feet
Plot Date: Jul 20 2023