



Jennifer Bertino-Tarrant  
County Executive  
Dale D. Butalla  
Supervisor of Assessments

Disclaimer of Warranties and Accuracy of Data  
Although the data developed by Will County for its maps, websites, and Geographic Information System has been produced and processed from sources believed to be reliable, no warranty, expressed or implied, is made regarding accuracy, adequacy, completeness, legality, reliability or usefulness of any information. This disclaimer applies to both isolated and aggregate uses of the information. The County and elected officials provide this information on an "as is" basis. All warranties of any kind, express or implied, including but not limited to the implied warranties of merchantability, fitness for a particular purpose, freedom from contamination by computer viruses or hackers and non-infringement of proprietary rights are disclaimed. Changes may be periodically made to the information herein; these changes may or may not be incorporated in any new version of the publication. If you have obtained information from any of the County web pages from a source other than the County pages, be aware that electronic data can be altered subsequent to original distribution. Data can also quickly become out of date. It is recommended that careful attention be paid to the contents of any data, and that the originator of the data or information be contacted with any questions regarding appropriate use. Please direct any questions to Mapping & Planning at (815) 740-4664.

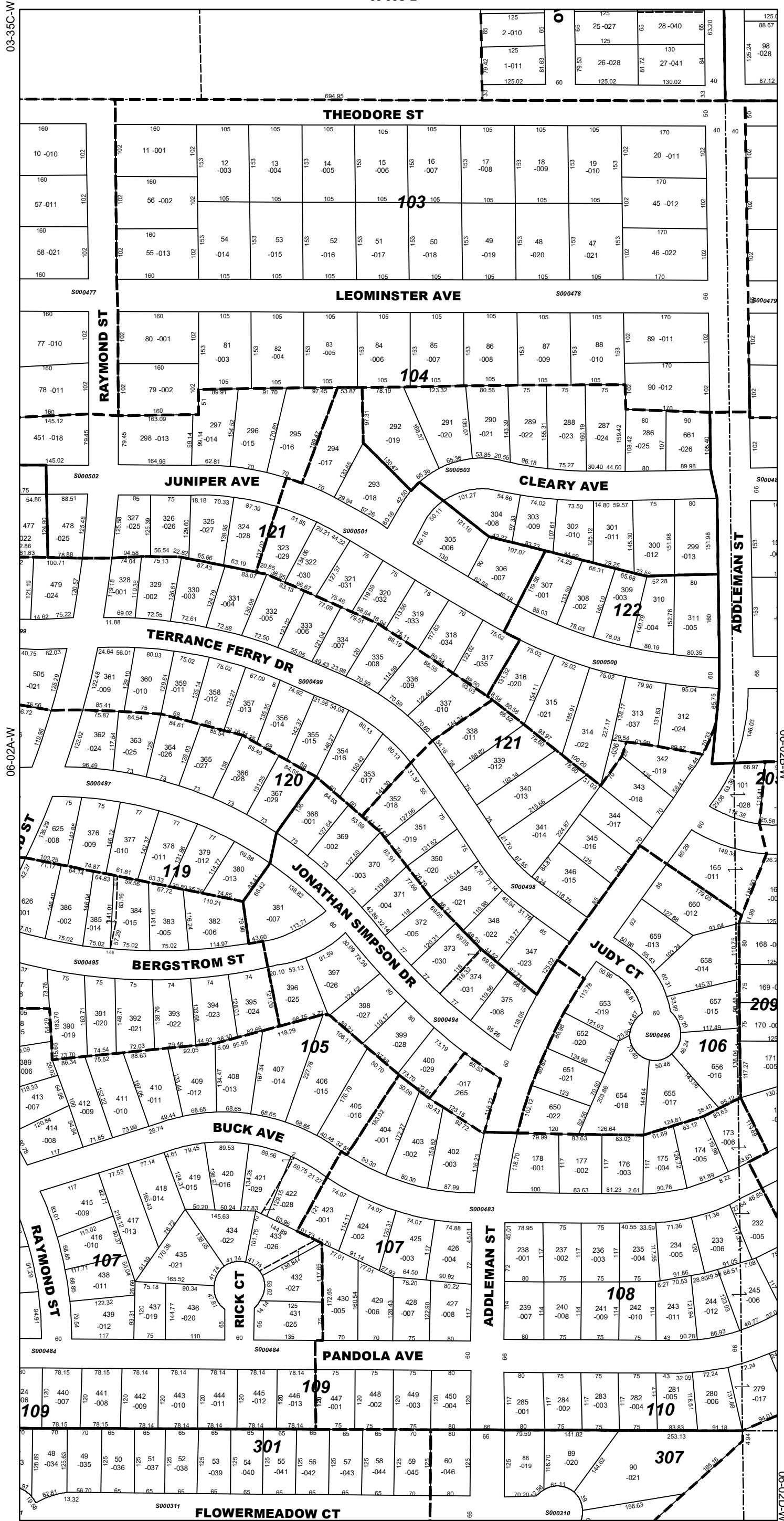
# Will County, Illinois

Tax Assessment Map  
Revised for the 2023 Assessment  
Copyrighted 2023 by Will County GIS Division

03-35C-W

03-35C-E

03-35D-W



Subdivision List

- S000477 Longleat Unit No. 1 R73-024143
- S000478 Longleat Unit No. 2 R74-018326
- S000480 Longleat Unit No. 4A R75-020576
- S000483 Longleat Unit No. 5C R77-029202
- S000484 Longleat Unit No. 5D R78-023795
- S000494 Longleat Unit No. 7H R88-040626
- S000495 Longleat Unit No. 7I R88-056929
- S000496 Longleat Unit No. 7J R89-018420
- S000497 Longleat Unit No. 7K R89-021641
- S000498 Longleat Unit No. 7L R89-041373
- S000499 Longleat Unit No. 7M R89-051240
- S000500 Longleat Unit No. 7N R90-048085
- S000501 Longleat Unit No. 7O R91-019025
- S000502 Longleat Unit No. 7P R91-029218
- S000503 Longleat Unit No. 7Q R91-029219