



Jennifer Bertino-Tarrant
County Executive
Dale D. Butalla
Supervisor of Assessments

Disclaimer of Warranties and Accuracy of Data
Although the data developed by Will County for its maps, websites, and Geographic Information System has been produced and processed from sources believed to be reliable, no warranty, expressed or implied, is made regarding accuracy, adequacy, completeness, legality, reliability or usefulness of any information. This disclaimer applies to both isolated and aggregate uses of the information. The County and elected officials provide this information on an "as is" basis. All warranties of any kind, express or implied, including but not limited to the implied warranties of merchantability, fitness for a particular purpose, freedom from contamination by computer viruses or hackers and non-infringement of proprietary rights are disclaimed. Changes may be periodically made to the information herein; these changes may or may not be incorporated in any new version of the publication. If you have obtained information from any of the County web pages from a source other than the County pages, be aware that electronic data can be altered subsequent to original distribution. Data can also quickly become out of date. It is recommended that careful attention be paid to the contents of any data, and that the originator of the data or information be contacted with any questions regarding appropriate use. Please direct any questions to Mapping & Planning at (815) 740-4664.

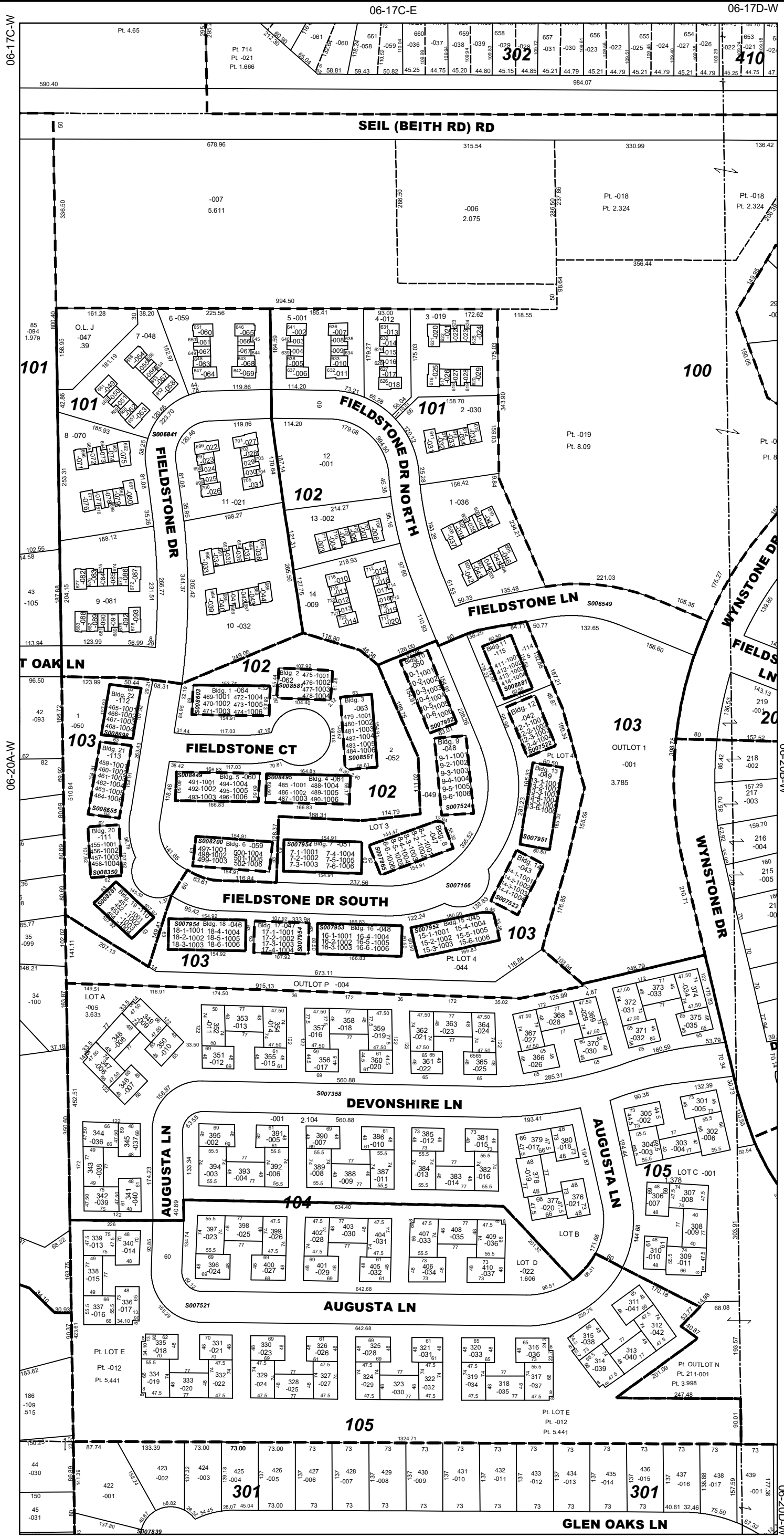
Will County, Illinois

Tax Assessment Map

Revised for the 2023 Assessment
Copyrighted 2023 by Will County GIS Division

Map Page 06-20A-E

Troy Township
E.1/2 N.W.1/4 Sec.20 T.35N. R.9E.



Subdivision List

- S006315**
Kipling Estates Unit 1
R99-091328
- S006549**
Kipling Estates Unit 3 Phase 1
R2000-040180
- S006841**
Kipling Estates Unit 3 Phase 2
R2001-030062
- S007033**
Kipling Estates Unit 5 Phase 1
R2001-152084
- S007166**
Kipling Estates Unit 7 Phase 1
R2002-103108
- S007358**
Kipling Estates Unit 6 Phase 1
R2002-153129
- S007521**
Kipling Estates Unit 6 Phase 2
R2003-252807
- S007522**
Englewood Pointe Townhomes
Condos, 1st Special Amdt.
(Bldg. 12 of Lot 4)
R2003-020448 / ReR2003-090311
- S007523**
Englewood Pointe Townhomes
Condos, 2nd Special Amdt.
(Bldg. 14 of Lot 4)
R2003-090312
- S007524**
Englewood Pointe Townhomes
Condos (Bldg 9 of Lot 2)
R2003-020447 / ReR2003-090310
- S007865**
Englewood Pointe Townhomes
Condos, 3rd Special Amdt.
(Bldg. 8 of Lot 3)
R2003-266848
- S007951**
Englewood Pointe Townhomes
Condos, 5th Special Amdt.
(Bldg. 13 of Lot 4)
R2004-074901
- S007952**
Englewood Pointe Townhomes
Condos, 4th Special Amdt.
(Bldg 10 of Lot 3 &
Bldg 15 of Lot 4)
R2004-046575
- S007953**
Englewood Pointe Townhomes
Condos, 6th Special Amdt.
(Bldg 16 of Lot 4)
R2004-125499
- S007954**
Englewood Pointe Townhomes
Condos, 7th Special Amdt.
(Bldg. 7 of Lot 3 & Bldgs 17
& 18 of Lot 4)
R2004-160704
- S008009**
Kipling Estates Unit 7 Phase 2
R2004-145585
- S008200**
Kipling Townes Condos
R2004-230750
- S008281**
Kipling Townes Condos,
1st Amdt. (Bldg. 19)
R2005-027411
- S008350**
Kipling Townes Condos,
2nd Amdt. (Bldg. 20)
R2005-079907
- S008449**
Kipling Townes Condos,
3rd Amdt. (Bldg. 5)
R2005-137311 / ReR2005-172894
- S008495**
Kipling Townes Condos,
4th Amdt. (Bldg. 4)
R2005-172582
- S008551**
Kipling Townes Condos,
5th Amdt.
(Bldg. 3)
R2005-206896
- S008581**
Kipling Townes Condos,
6th Amdt. (Bldg. 2)
R2005-227795
- S008603**
Kipling Townes Condos,
7th Amdt. (Bldg. 1)
R2006-023186 / ReR2006-049531
- S008655**
Kipling Townes Condos,
8th Amdt. (Bldg. 21)
R2006-046658
- S008698**
Kipling Townes Condos,
9th Amdt. (Bldg. 22)
R2006-075244
- S008881**
Kipling Townes Condos, 10th
Amdt. (Bldg. 11)
R2007-009540 / ReR2007-111348

1 inch = 200 feet
Plot Date: Jul 20 2023