



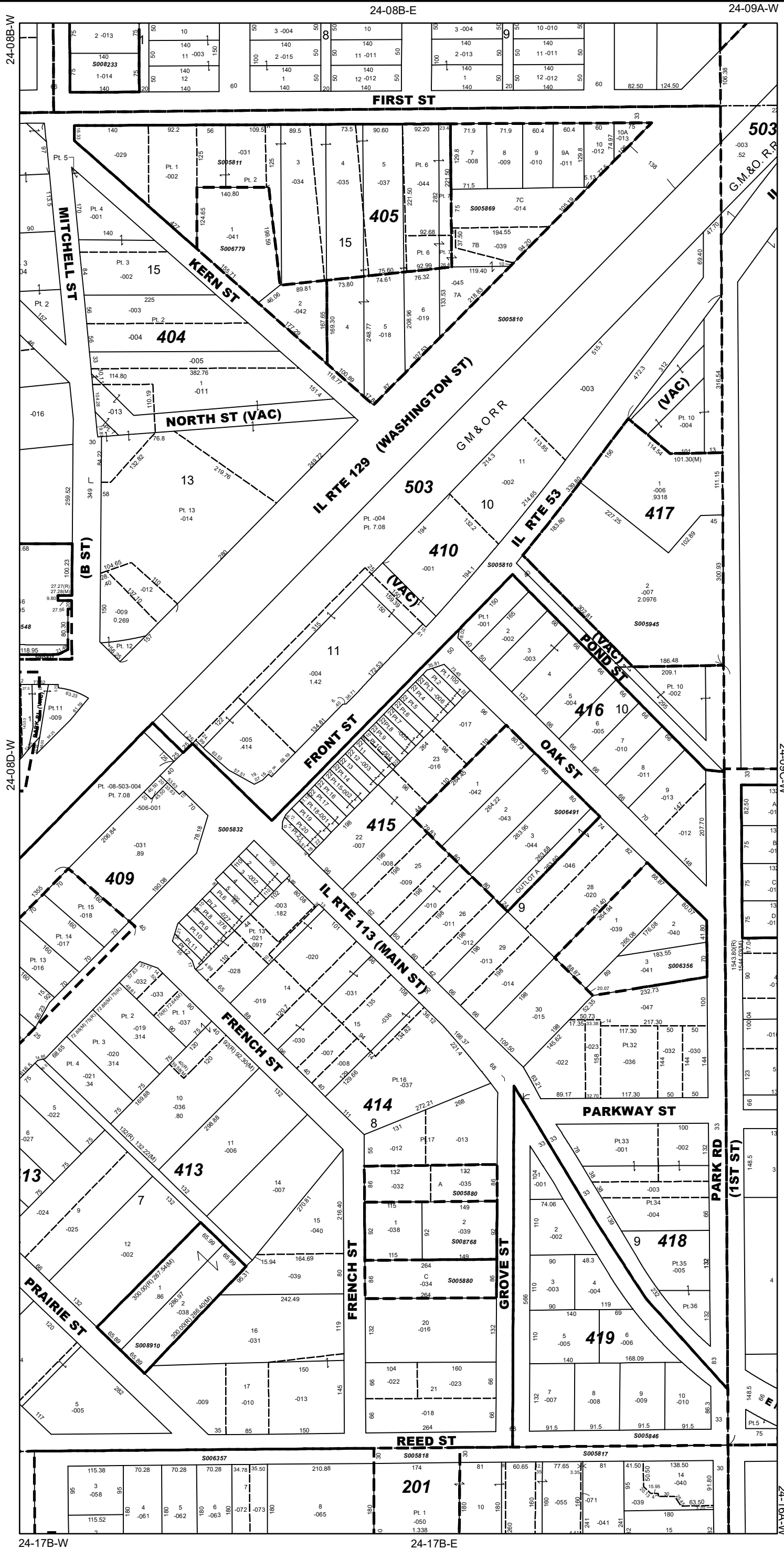
**Jennifer Bertino-Tarrant**  
County Executive  
**Dale D. Butalla**  
Supervisor of Assessments

Disclaimer of Warranties and Accuracy of Data  
Although the data developed by Will County for its maps, websites, and Geographic Information System has been produced and processed from sources believed to be reliable, no warranty, expressed or implied, is made regarding accuracy, adequacy, completeness, legality, reliability or usefulness of any information. This disclaimer applies to both isolated and aggregate uses of the information. The County and elected officials provide this information on an "as is" basis. All warranties of any kind, express or implied, including but not limited to the implied warranties of merchantability, fitness for a particular purpose, freedom from contamination by computer viruses or hackers and non-infringement of proprietary rights are disclaimed. Changes may be periodically made to the information herein; these changes may or may not be incorporated in any new version of the publication. If you have obtained information from any of the County web pages from a source other than the County pages, be aware that electronic data can be altered subsequent to original distribution. Data can also quickly become out of date. It is recommended that careful attention be paid to the contents of any data, and that the originator of the data or information be contacted with any questions regarding appropriate use. Please direct any questions to Mapping & Planning at (815) 740-4664.

**Will County, Illinois**  
Tax Assessment Map  
Revised for the 2023 Assessment  
Copyrighted 2023 by Will County GIS Division

Map Page 24-08D-E

Reed Township  
E.1/2 S.E. 1/4 Sec. 8 T.32N. R.9E.



- Subdivision List**
- S005803**  
City of Braidwood 1st Addn.  
R80-021117
  - S005810**  
Chicago & Wilmington Coal Co.'s Sub  
83116 (1-65&66)
  - S005811**  
Resub of Lots 6 & 7 in Chicago & Coal Co's Addn. 4-24
  - S005832**  
John H. Daniels Sub (F/K/A Chicago & Wilmington Coal Co's Sub)  
59940 (3-29 or 104-256)
  - S005846**  
Fallada Resub  
32-35
  - S005869**  
W. C. Frick Sub  
26-11
  - S005880**  
JW Sub  
R94-071694
  - S005945**  
Whitmore's Resub of Lots 10 & 11 in Chicago & Wilmington Coal Co's Sub  
R95-052044
  - S006356**  
Agnich Sub  
R99-008683
  - S006491**  
Hakey Resub.  
R2000-003323
  - S006779**  
T & V Wilson Subdivision  
R2000-138966
  - S008768**  
Nowak Sub  
R2006-142355
  - S008910**  
Pace Sub  
R2007-025084

1 inch = 200 feet  
Plot Date: Jul 21 2023